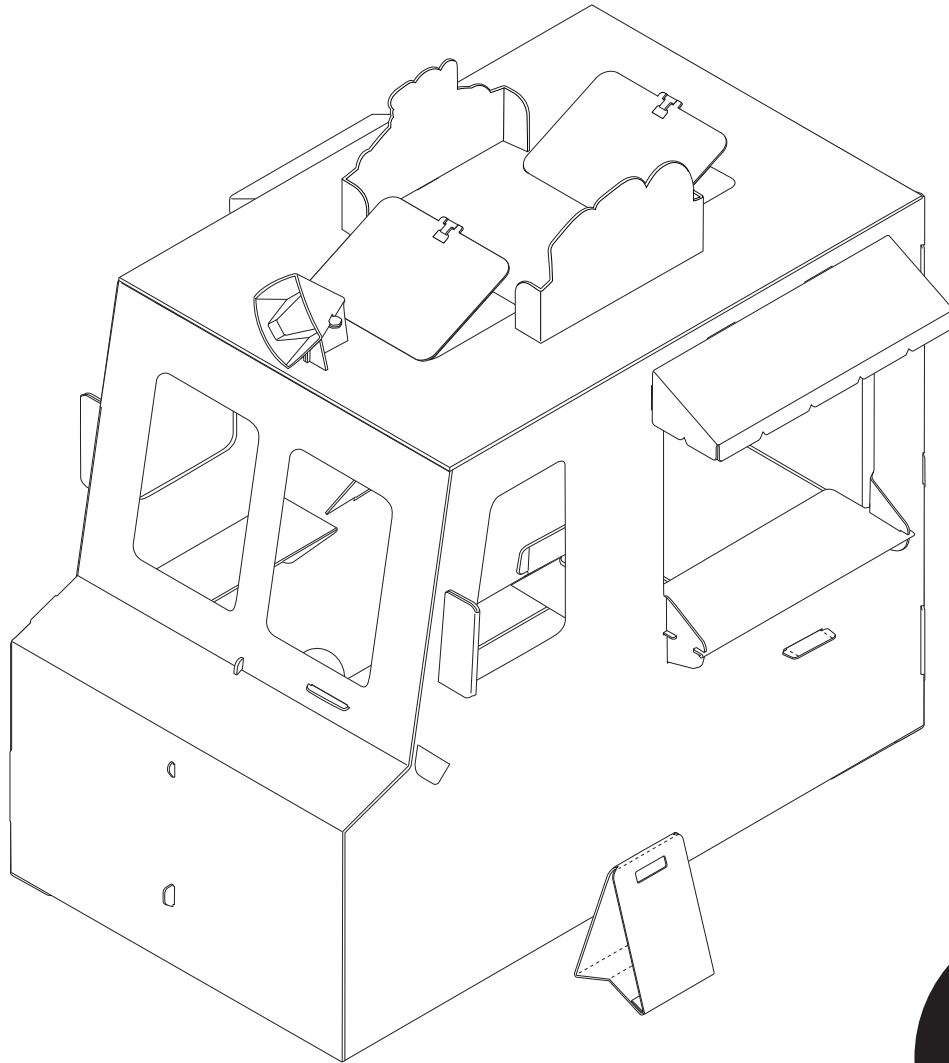




# Food Truck

## ASSEMBLY INSTRUCTIONS



Have a  
question  
or need help?  
Give us a call!  
1-800-284-3948

*Melissa & Doug*

We ♥ feedback! Call us: 1-800-284-3948  
MelissaAndDoug.com

Melissa & Doug products meet or exceed all U.S. toy testing standards and pass our high quality requirements.

© Melissa & Doug, LLC, P.O. Box 590, Westport, CT 06881

**Ages 3+**

Item #5510  
MADE IN CHINA

# THANK YOU!

Thank you for choosing the Melissa & Doug Food Truck Indoor Playhouse! It's a terrific way to help nourish a child's creativity and imagination, and to inspire independent play and storytelling for years to come.

---

## NOW IT'S TIME TO PUT IT TOGETHER!

Don't worry, assembling your new indoor playhouse is simple, and we're here to help. It may go a little faster with a partner to lend a hand, but we've made it so one person can assemble the playhouse. Here are a few tips before you begin:

- Read through **all** the instructions first.
- Clear a flat, covered space (carpeted is best) to lay out **all** the materials so everything is close at hand.
- We've included everything else you need. All parts are labeled (A-W).
- The instructions include lots of helpful pictures—we show you, step-by-step, how to align panels for speedy and accurate assembly. Note that each piece being added in a given step is highlighted in gray, and the “assembled view” (what it looks like in the completed product when the step is completed) is included in the lower right corner of every page.
- In the instructions, the name of a part is followed by a letter in parentheses. This letter corresponds to the label on the part, as well as the picture of the part shown on page 2.
- Helpful hints are highlighted with a large exclamation point.



**IMPORTANT:** Helpful hints are found here.

- If you have any questions, we're here for you! Give our customer care team a call at 1-800-284-3948!
- 

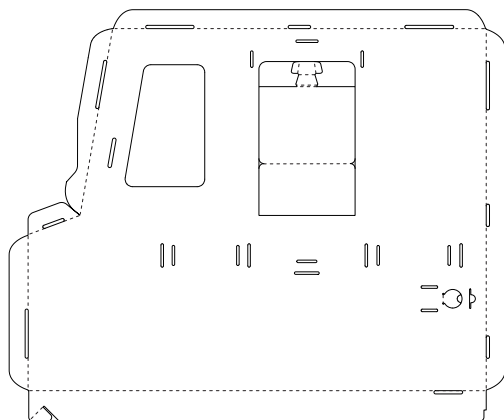
## WARNINGS!

Retain these instructions for future reference.

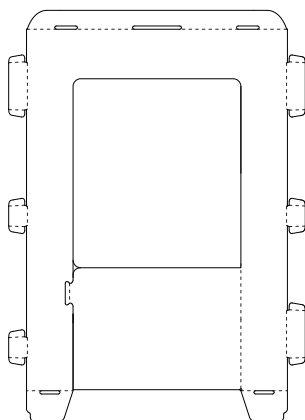
- Not intended for outdoor use.
- Do not place near fire or other heat sources.
- Keep away from water or other moist conditions.

# PARTS - Be Smart—Sort Your Parts

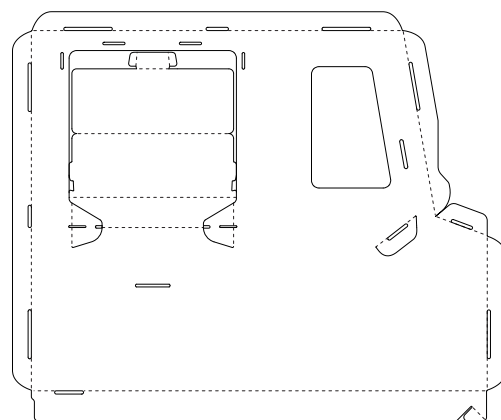
Before you begin assembly, make sure you have all the parts listed below.



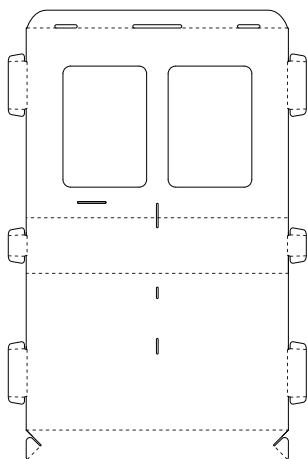
**A** passenger side panel (ice cream)



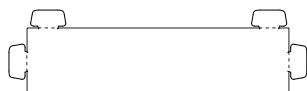
**B** back panel



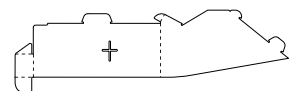
**C** driver side panel (BBQ)



**D** front panel



**E** bottom support brace



**F** dashboard



**G** steering column (with top slot)



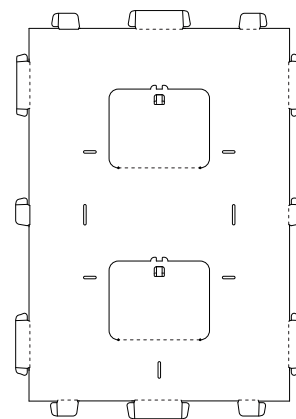
**H** steering column (with bottom slot)



**I** steering wheel



**J** steering wheel horn



**K** roof panel



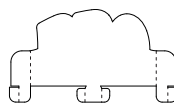
**L** gas tank cover



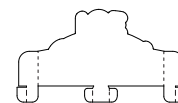
**M** front shelf (short)



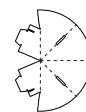
**N** back shelf (long)



**O** BBQ sign



**P** ice cream sign



**Q** speaker casing



**R** speaker inner cone



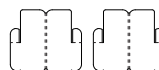
**S** speaker support



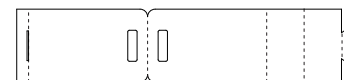
**T** ice cream awning (small)



**U** BBQ window awning (large)



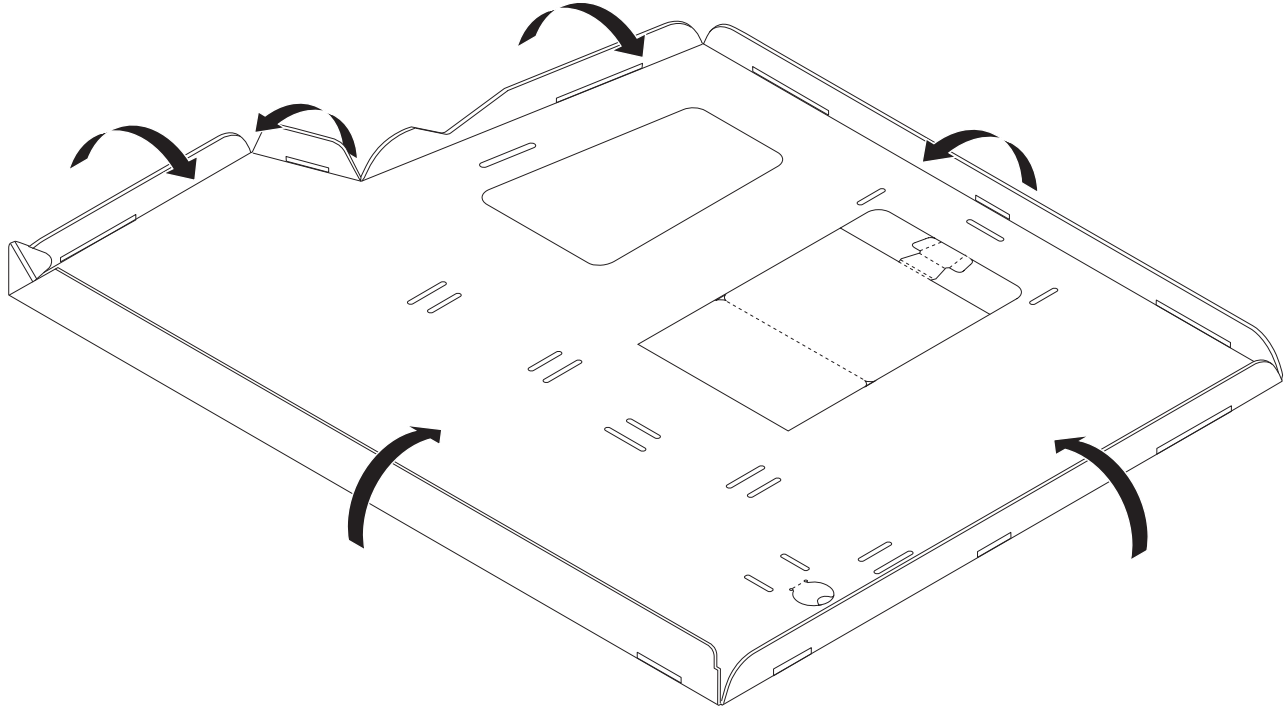
**V** rear view side mirrors (2)



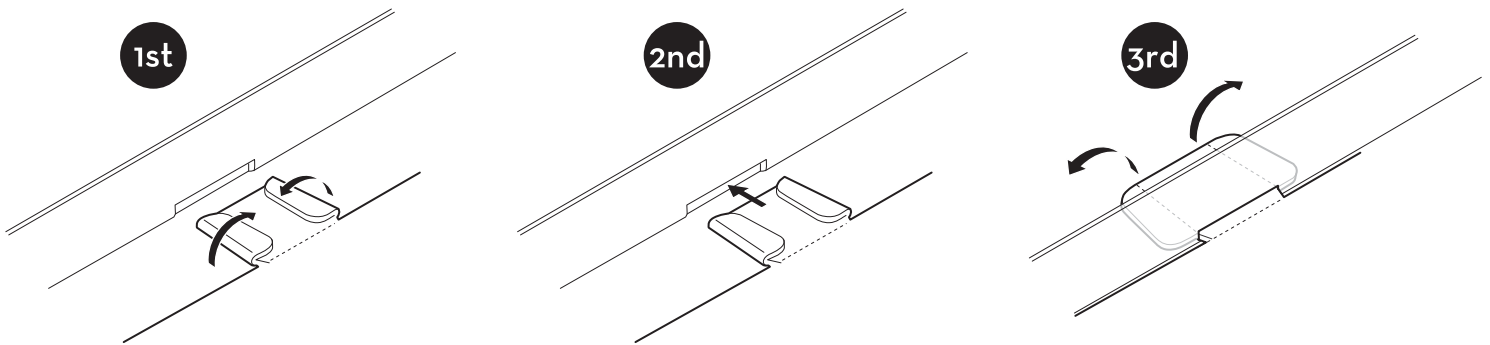
**W** sandwich board

# Fold & Crease All Edges, Tabs, and Flaps

- Before you begin assembly, lay panels flat and place artwork face down. Be sure all slots are clear of cardboard.
- Fold/crease along the scores on the edges of the panels and on tabs, flaps, shelves, and back door.

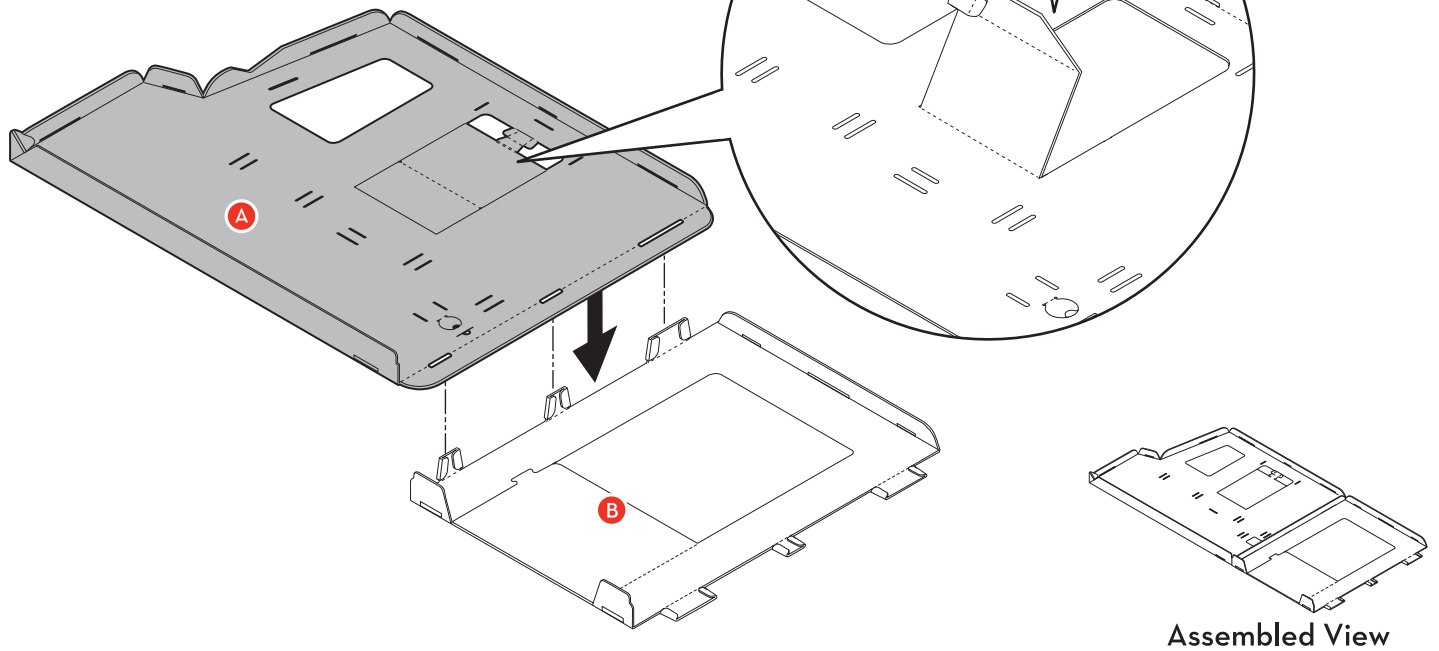


- Fold all tabs before inserting them into the slots. Unfold tabs after they have been inserted.



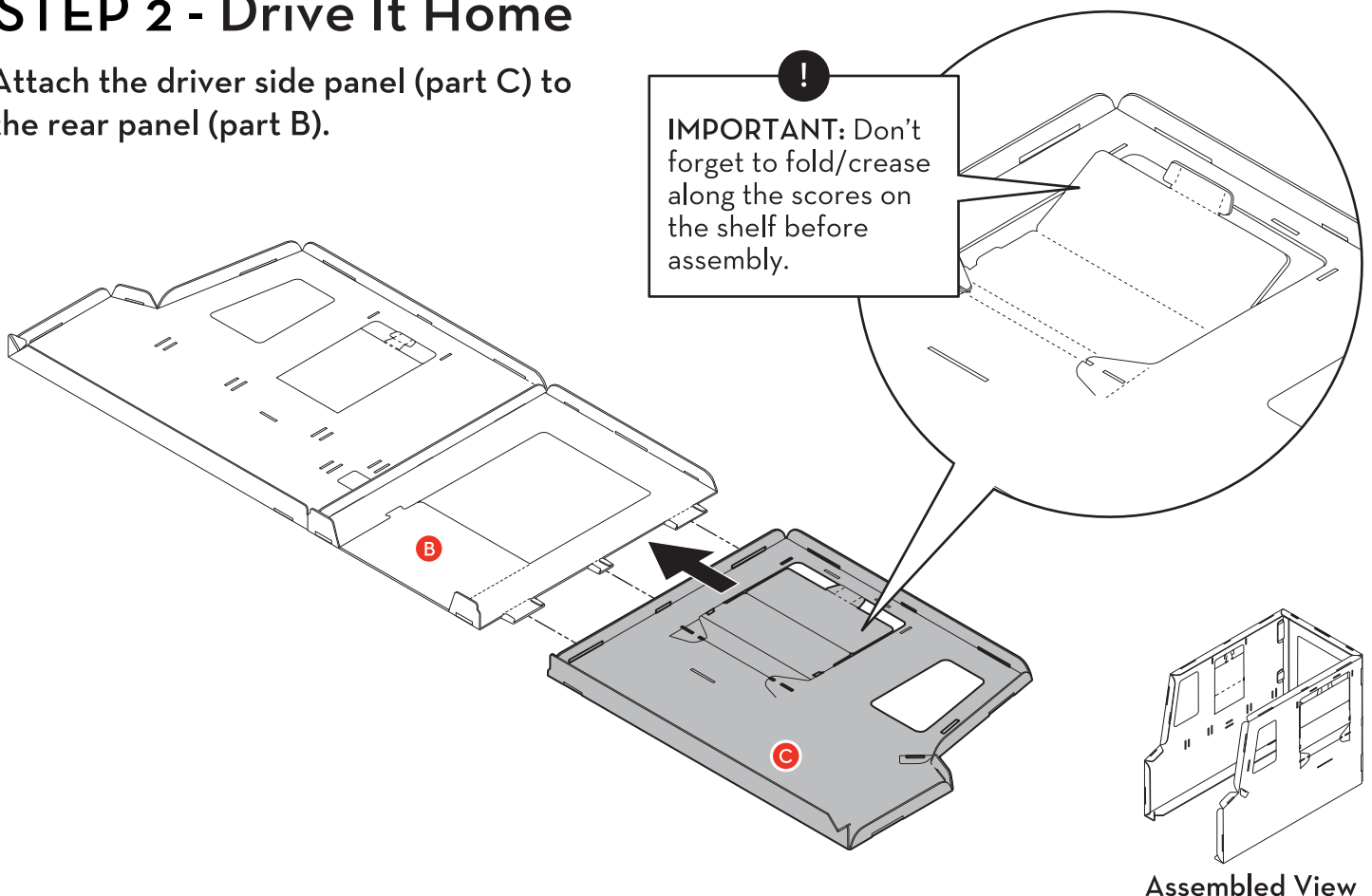
# STEP 1 - Every Journey Begins with the First Step

Attach the passenger side panel (part A) to back panel (part B).



## STEP 2 - Drive It Home

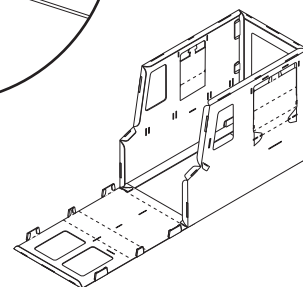
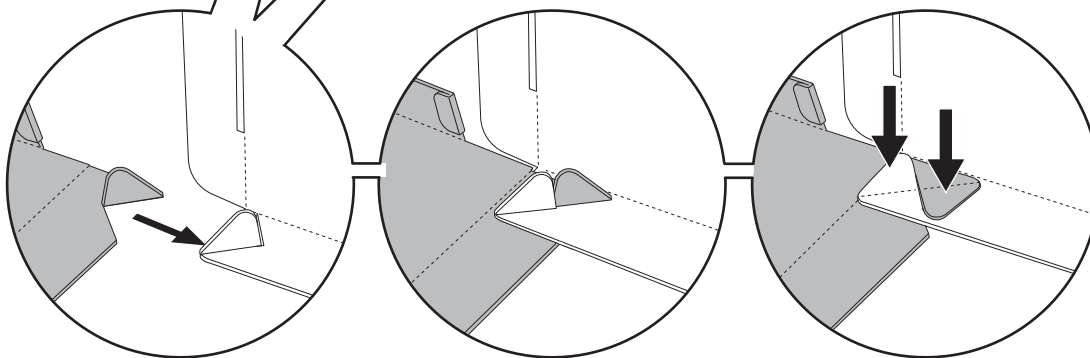
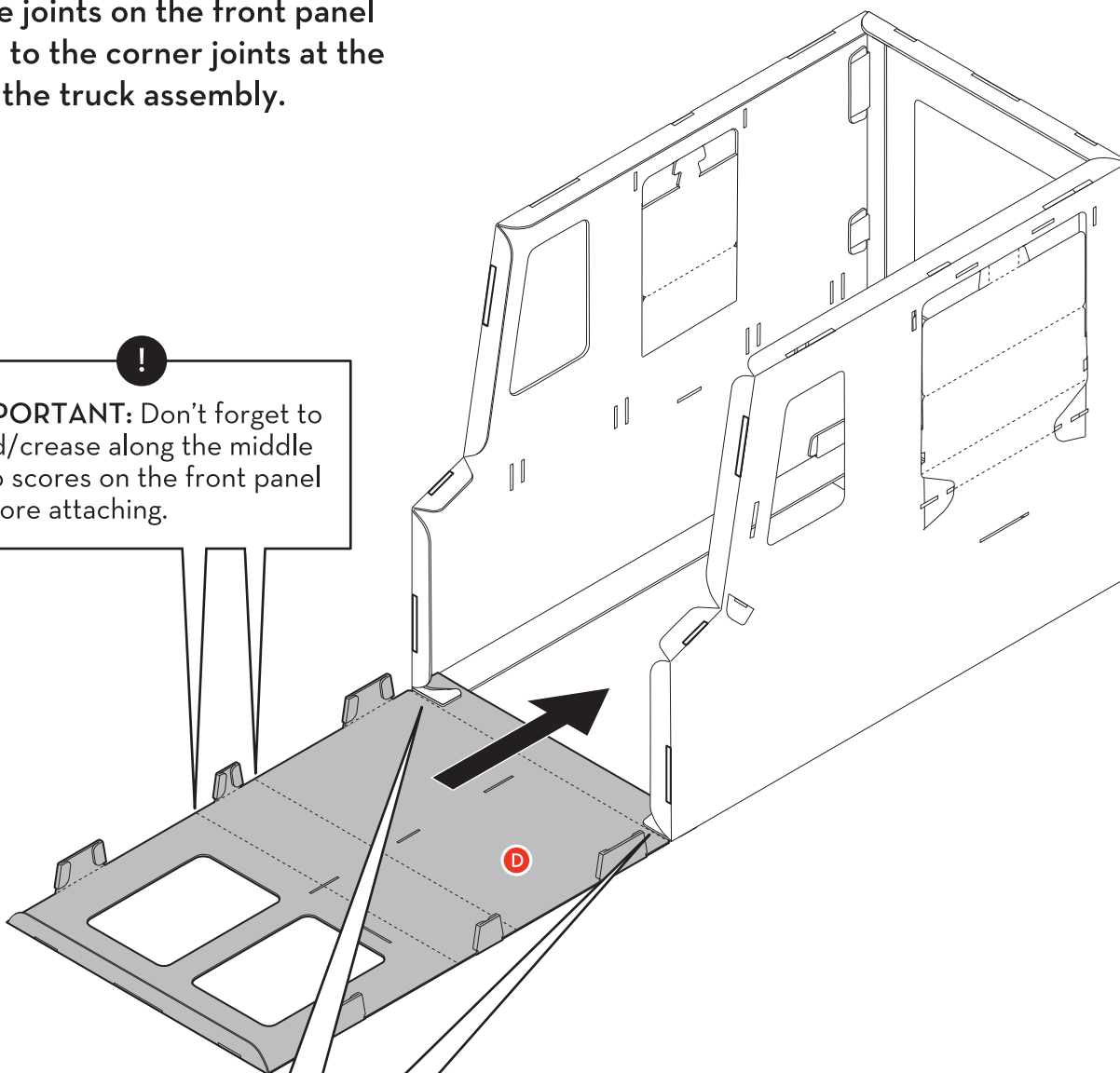
Attach the driver side panel (part C) to the rear panel (part B).



## STEP 3 - A Joint Effort

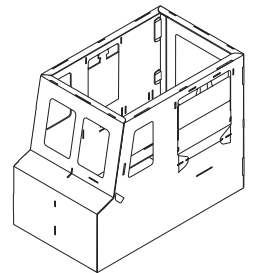
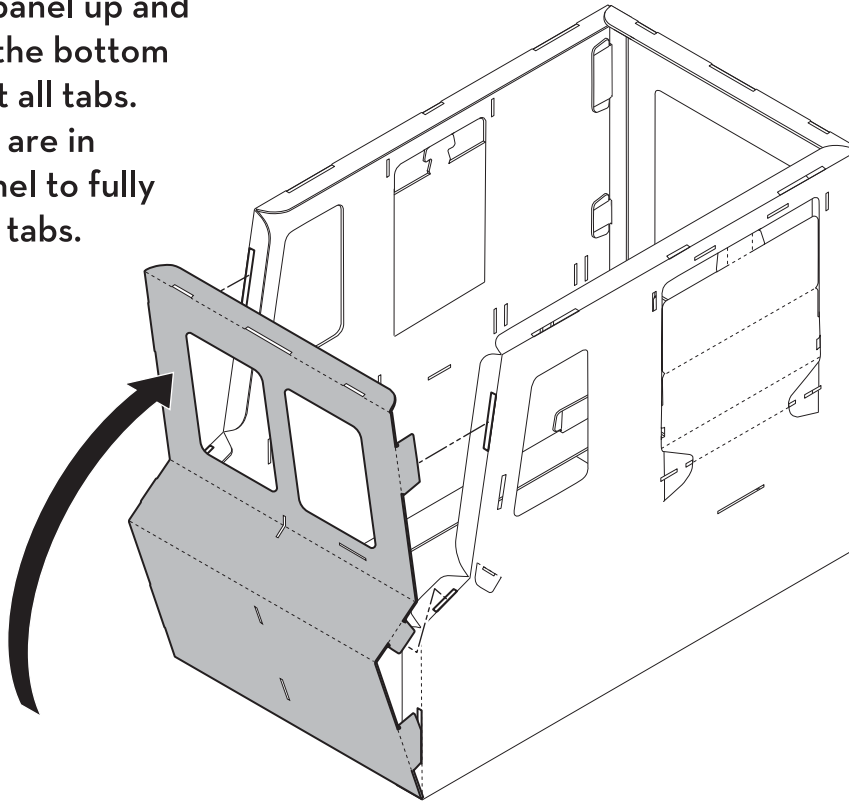
Lock the joints on the front panel (part D) to the corner joints at the base of the truck assembly.

**!**  
**IMPORTANT:** Don't forget to fold/crease along the middle two scores on the front panel before attaching.



## STEP 4 - Put Up a Good Front

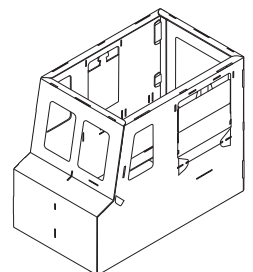
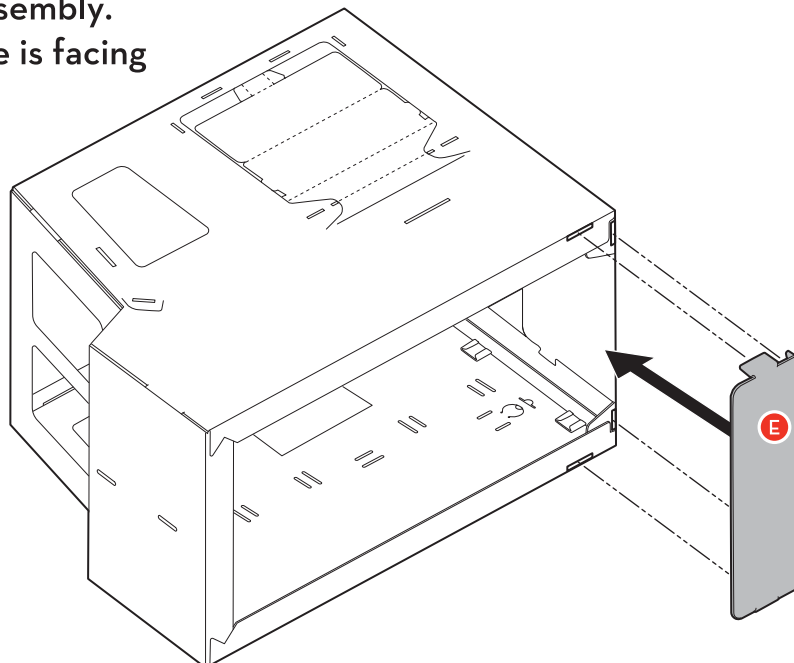
Rotate the front panel up and attach tabs from the bottom up. Partially insert all tabs. When all the tabs are in position, push panel to fully insert and lock all tabs.



Assembled View

## STEP 5 - Brace Yourself

Carefully flip the truck onto its side and attach the bottom support brace (part E) to the base of the truck assembly. Make sure shiny side is facing up inside truck.

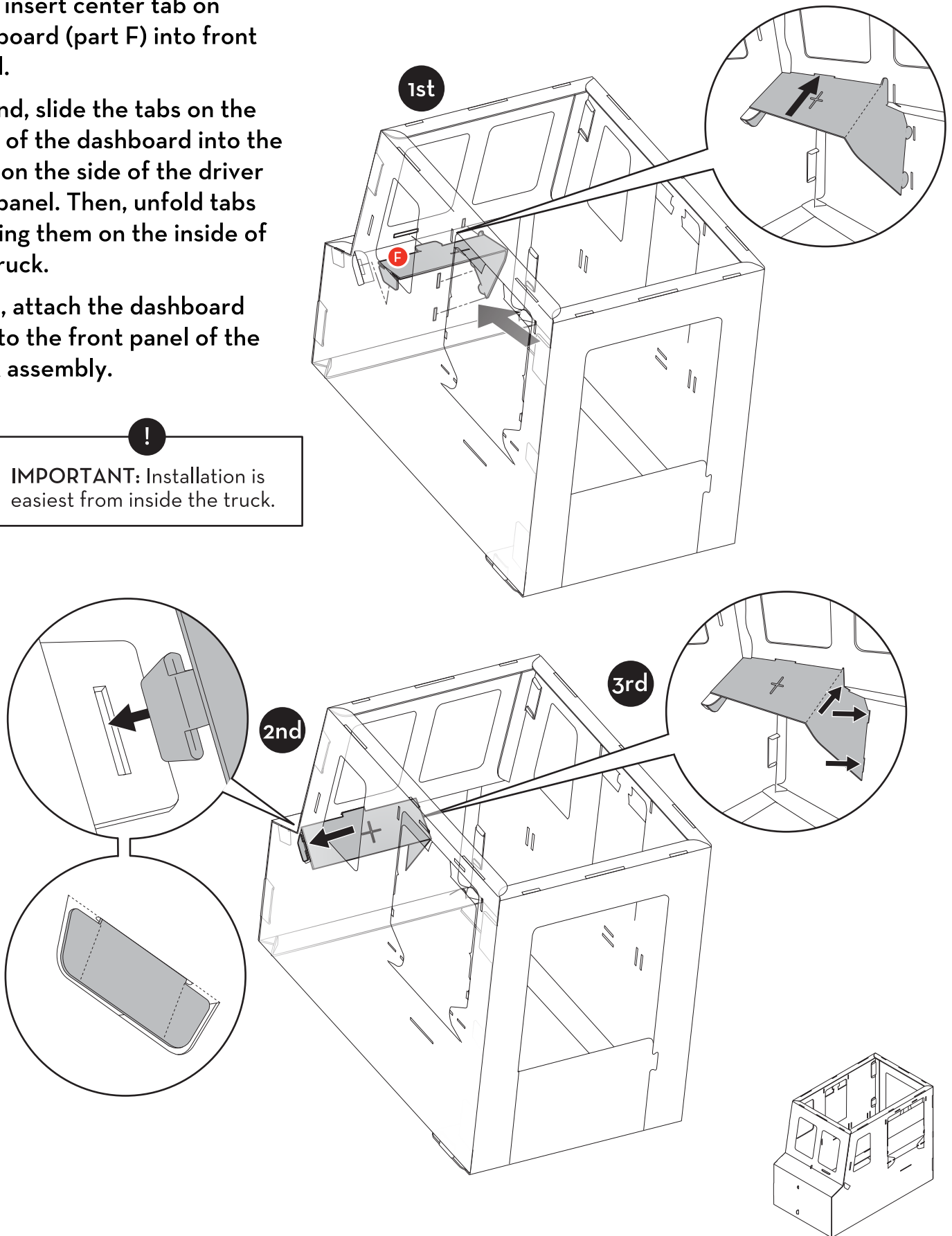


Assembled View

# STEP 6 - Dashing All the Way

- First, insert center tab on dashboard (part F) into front panel.
- Second, slide the tabs on the sides of the dashboard into the slots on the side of the driver side panel. Then, unfold tabs keeping them on the inside of the truck.
- Third, attach the dashboard tabs to the front panel of the truck assembly.

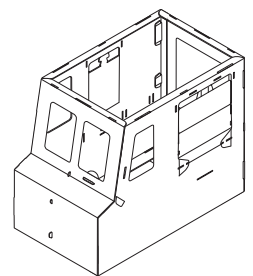
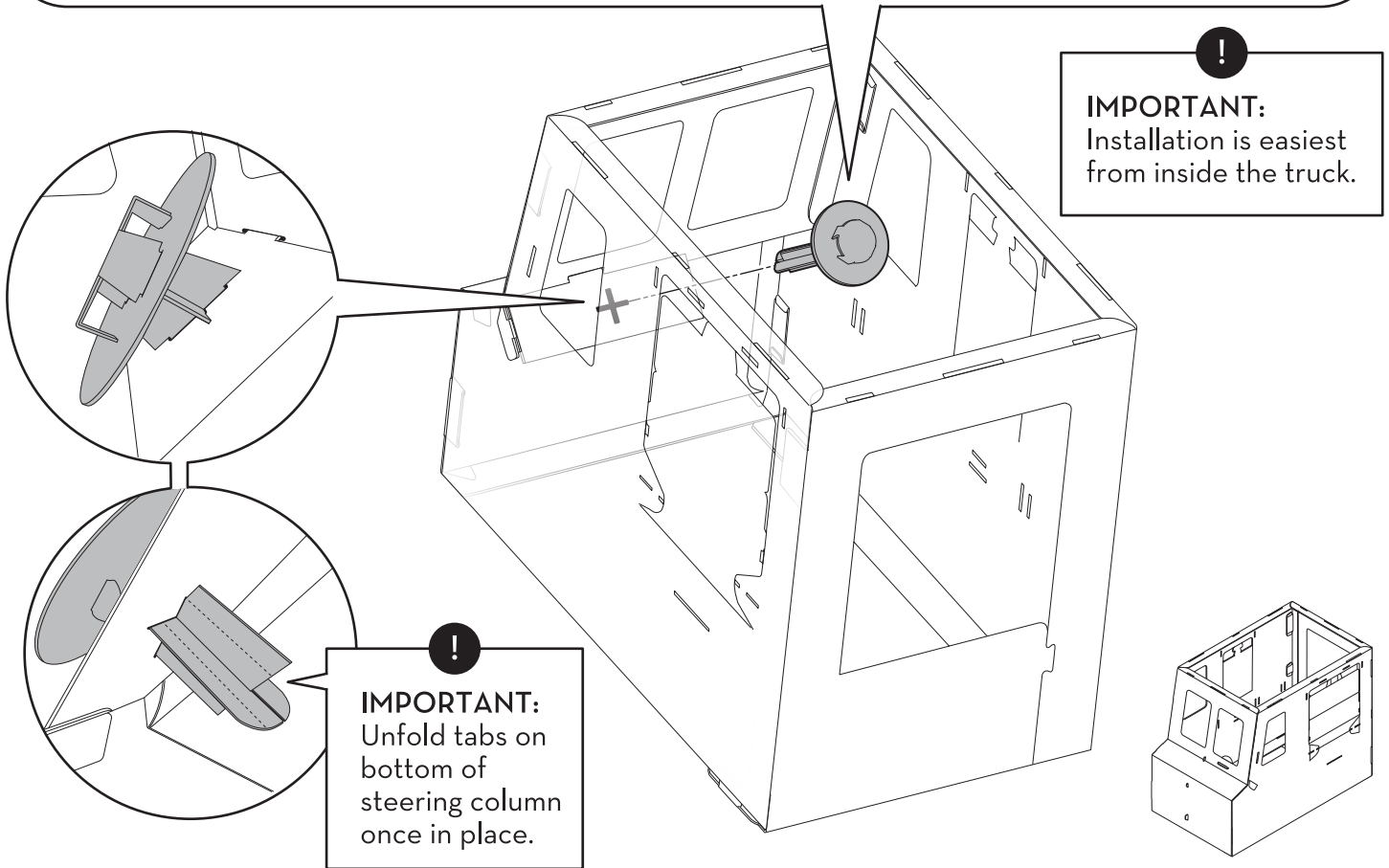
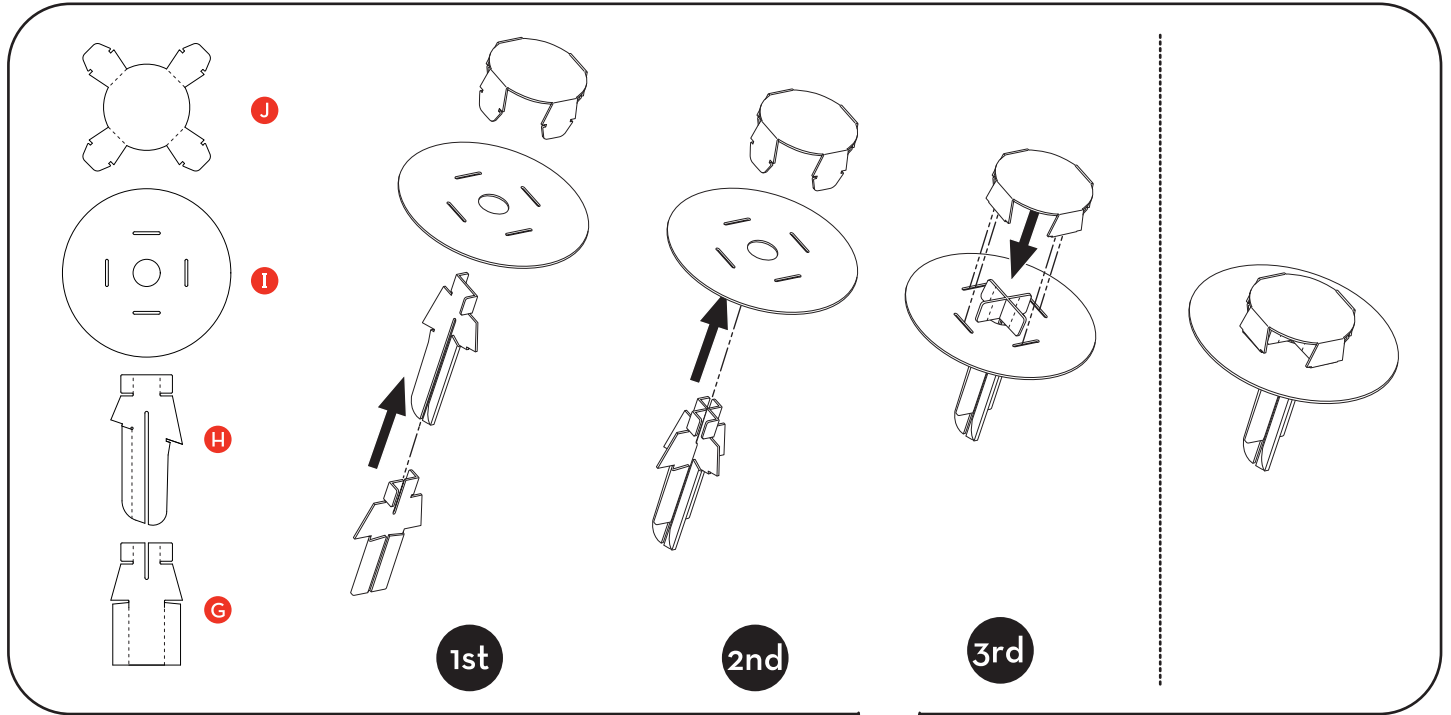
**!**  
**IMPORTANT:** Installation is easiest from inside the truck.





# STEP 7 - Steer It in the Right Direction

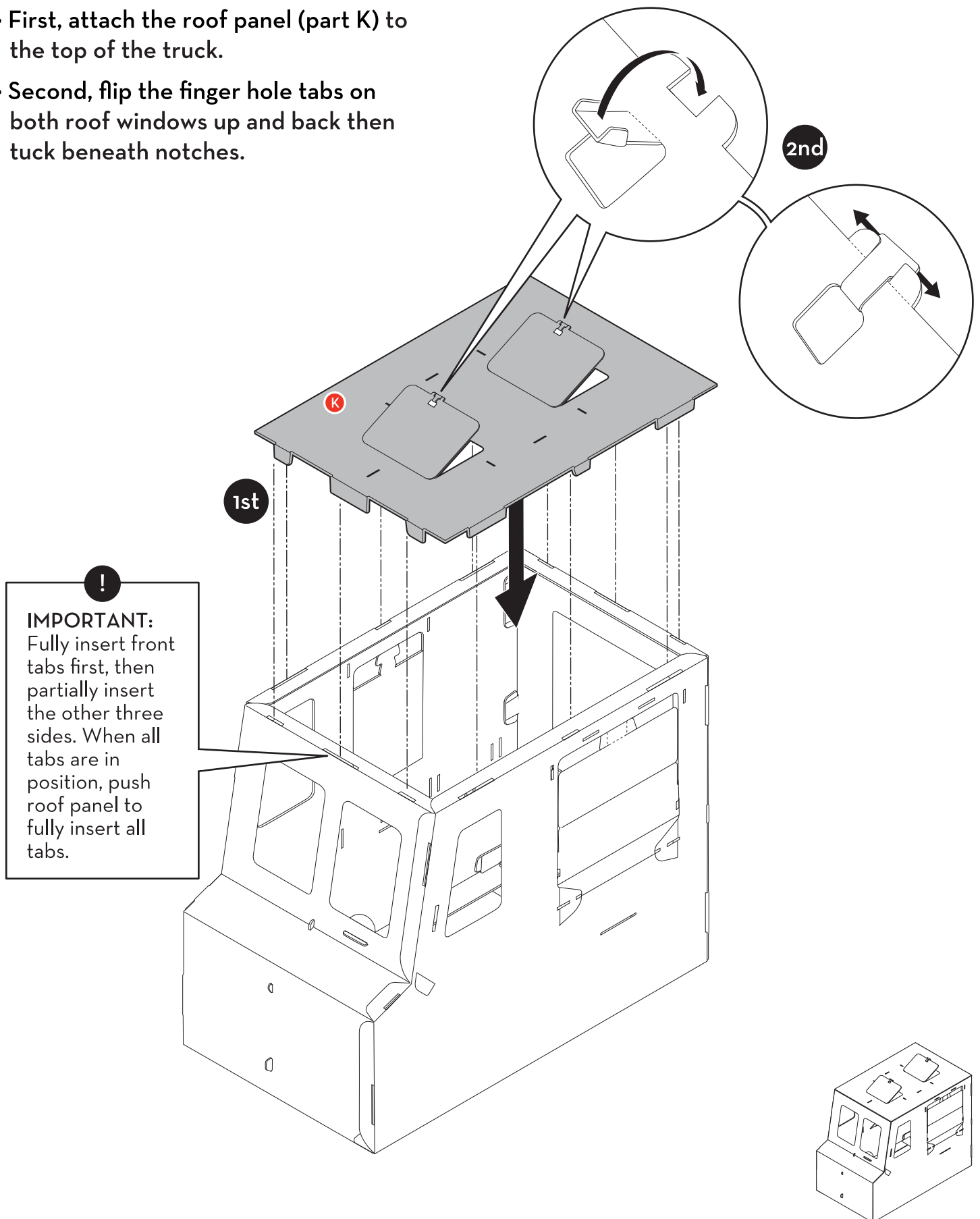
First, assemble the steering column (parts G & H). Second, attach the steering wheel (part I) to the steering column. Third, attach the horn (part J) to the top of the steering wheel. Finally, attach the steering column assembly to the dashboard.



Assembled View

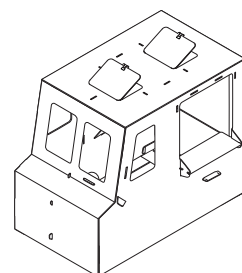
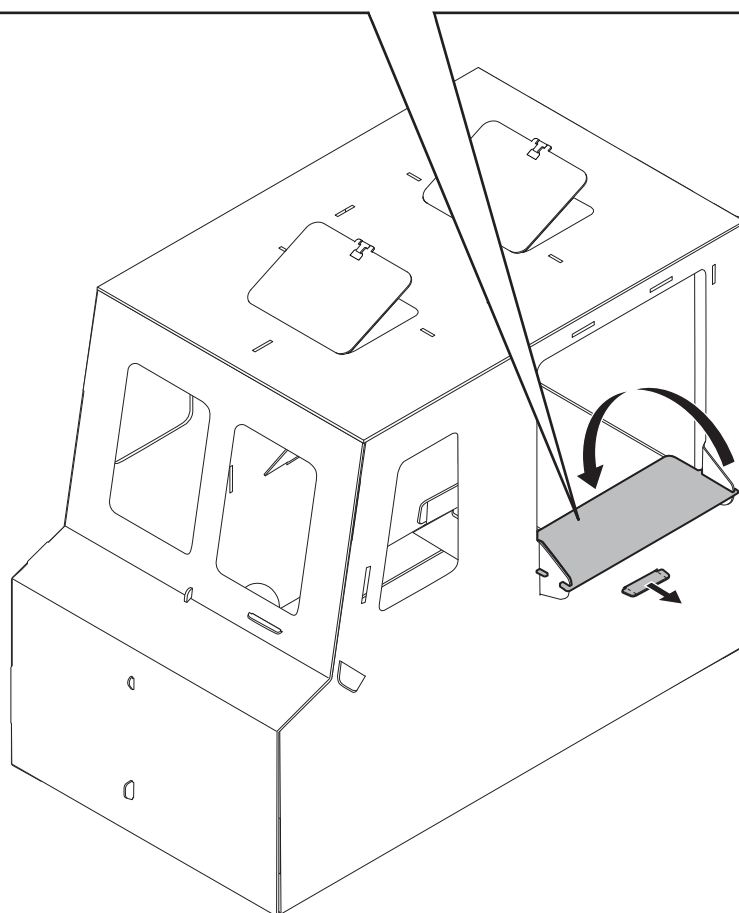
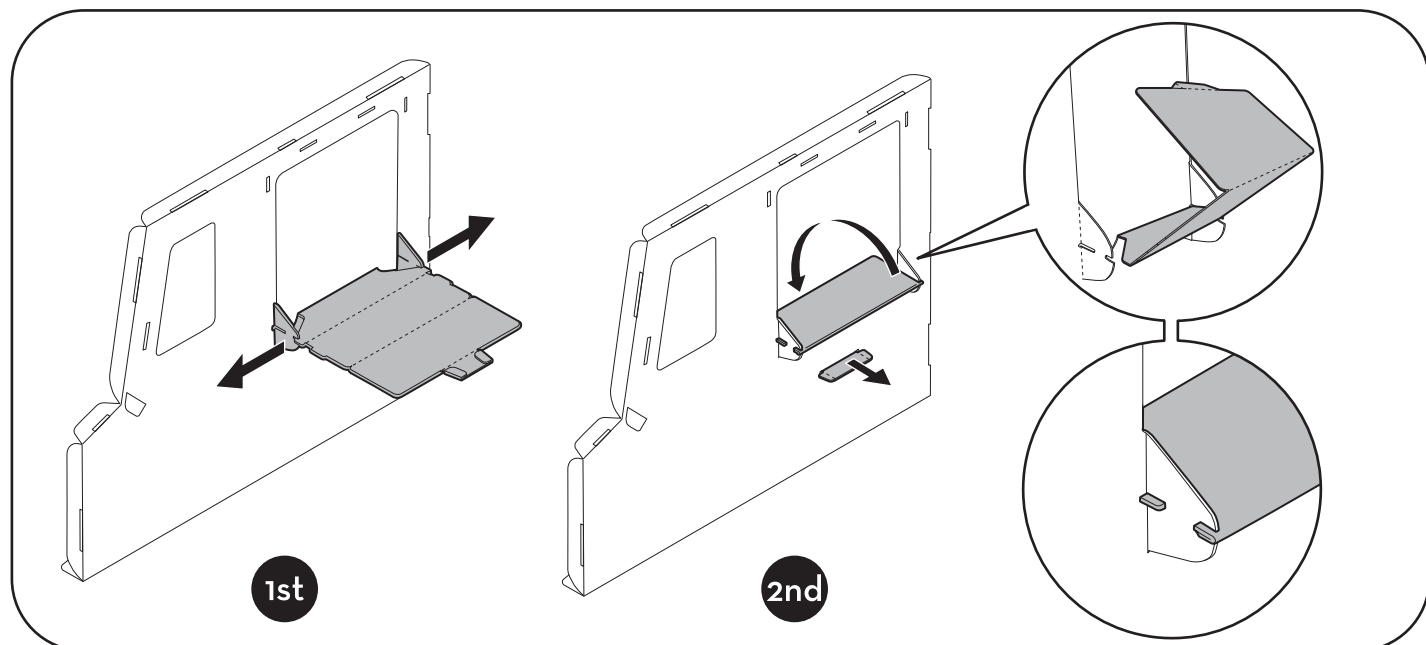
## STEP 8 - Put a Lid on It

- First, attach the roof panel (part K) to the top of the truck.
- Second, flip the finger hole tabs on both roof windows up and back then tuck beneath notches.



## STEP 9 - Do It Your-Shelf

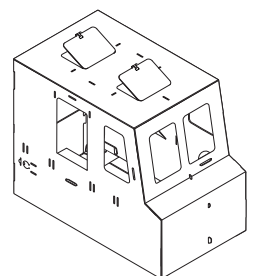
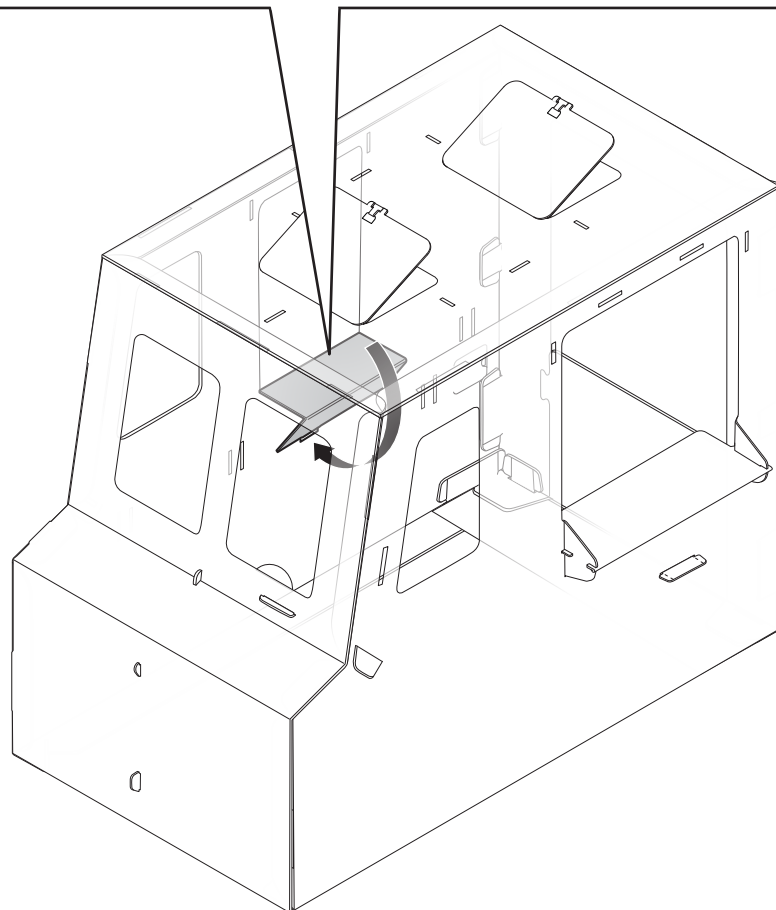
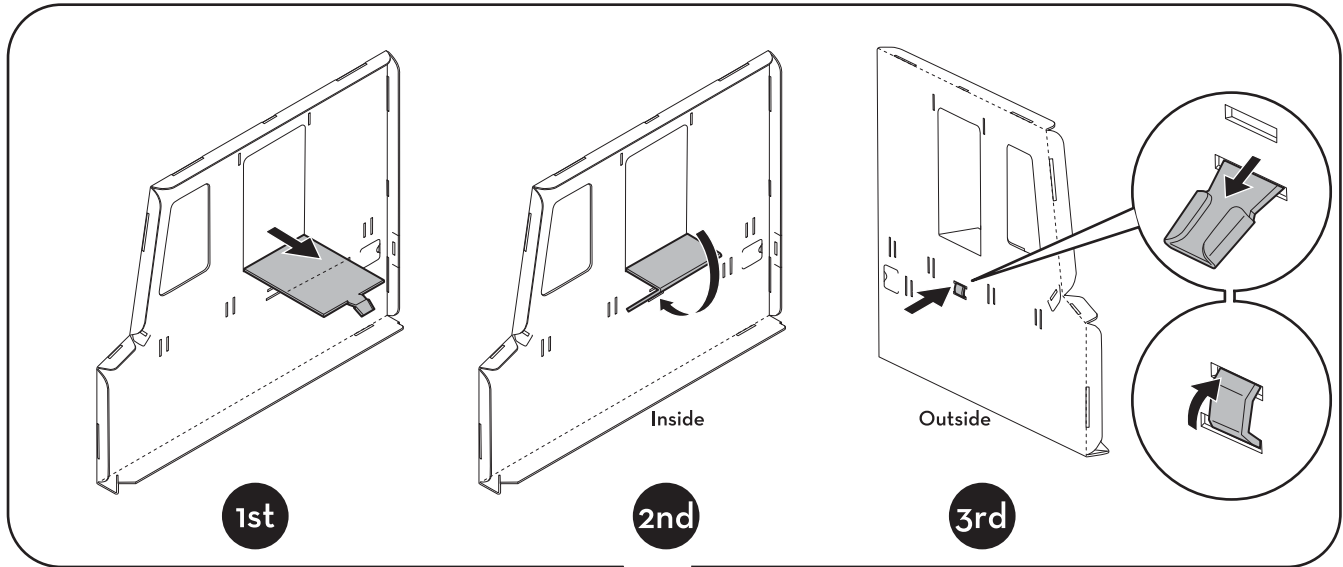
- First, fold out both shelf supports on the driver side panel.
- Second, fold the shelf out and then back into the window opening. Slide the shelf tab through the bottom shelf slot.



Assembled View

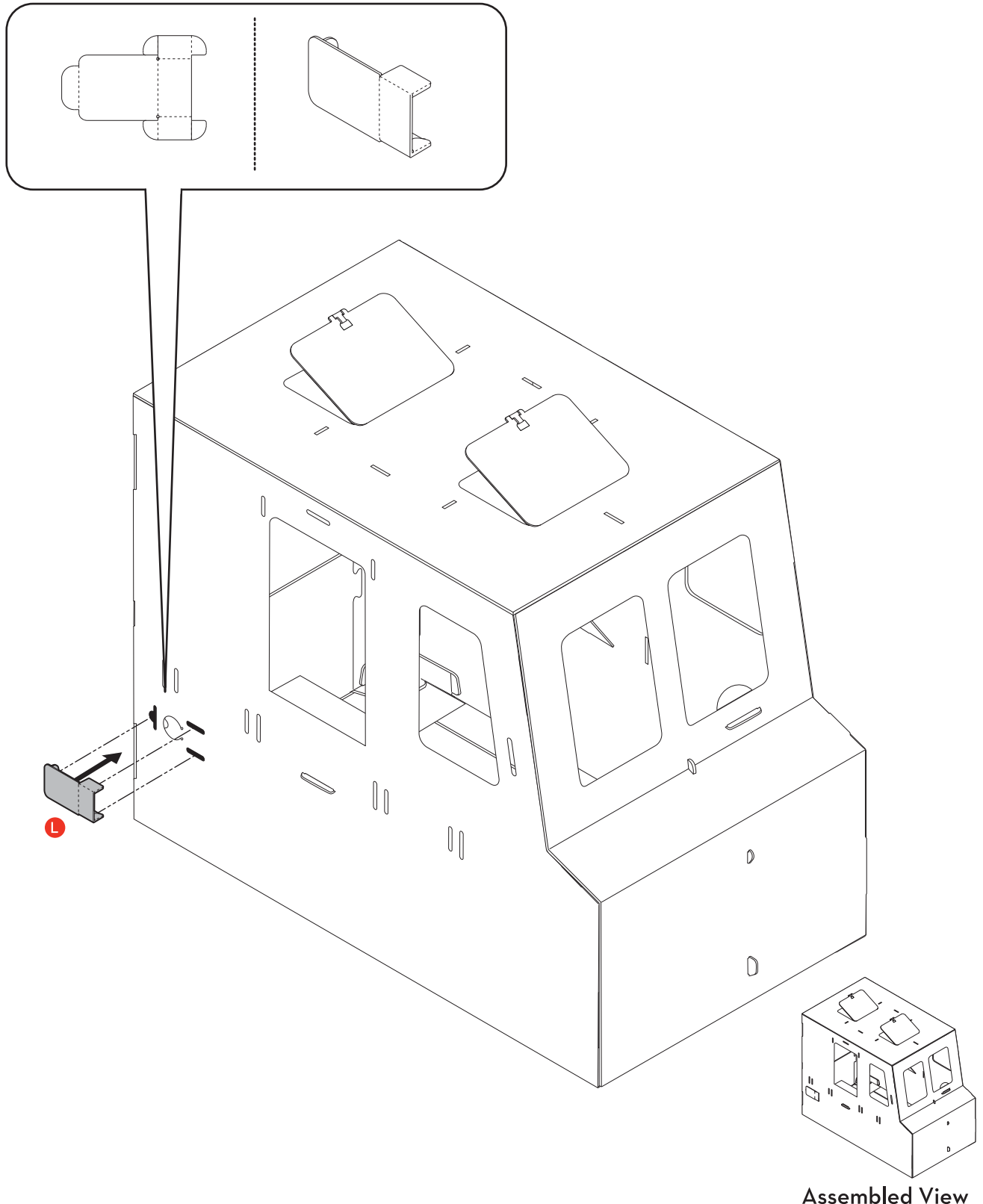
# STEP 10 - Shelf Motivated

- First, fold passenger side shelf into truck.
- Second, fold shelf back at crease and slide tab into lower passenger side shelf slot.
- Third, bring tab up and slide back into truck through the upper passenger side shelf slot.



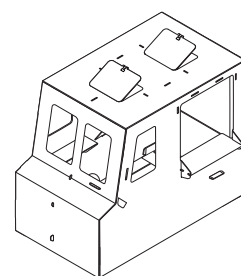
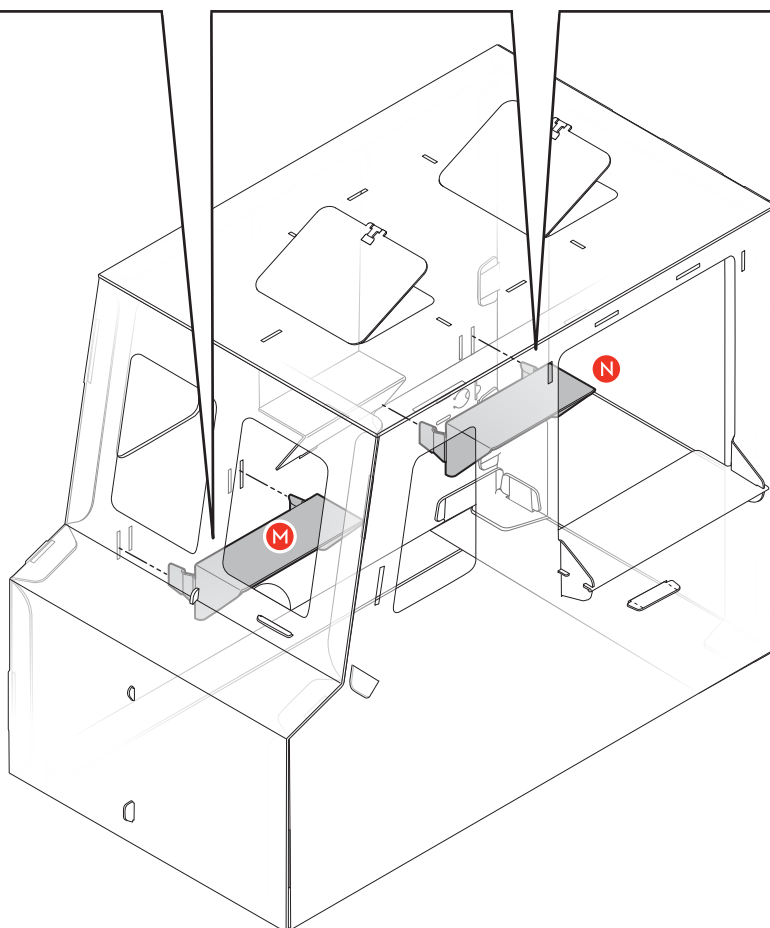
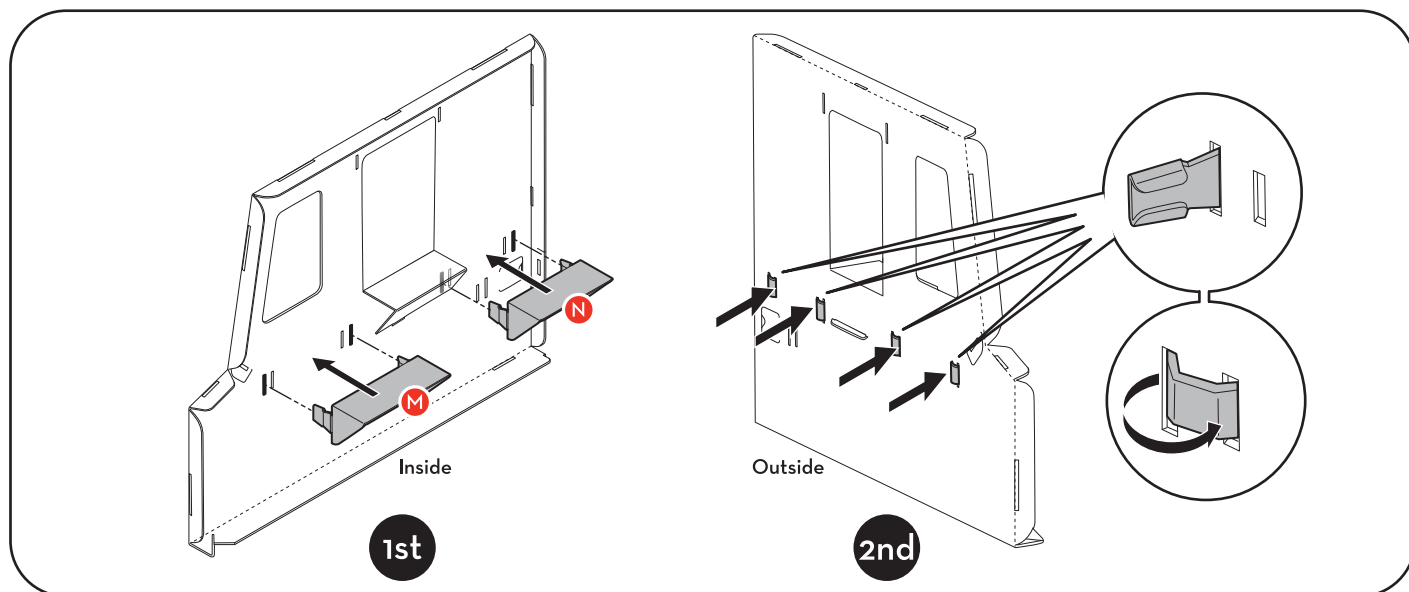
# STEP 11 - Give It Some Gas

- First, fold gas tank cover (part L) as illustrated.
- Second, slide the gas tank cover tabs through the gas tank slots. After gas tank cover is installed, pull the cover towards you to open.



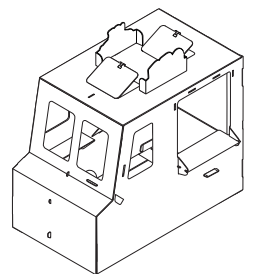
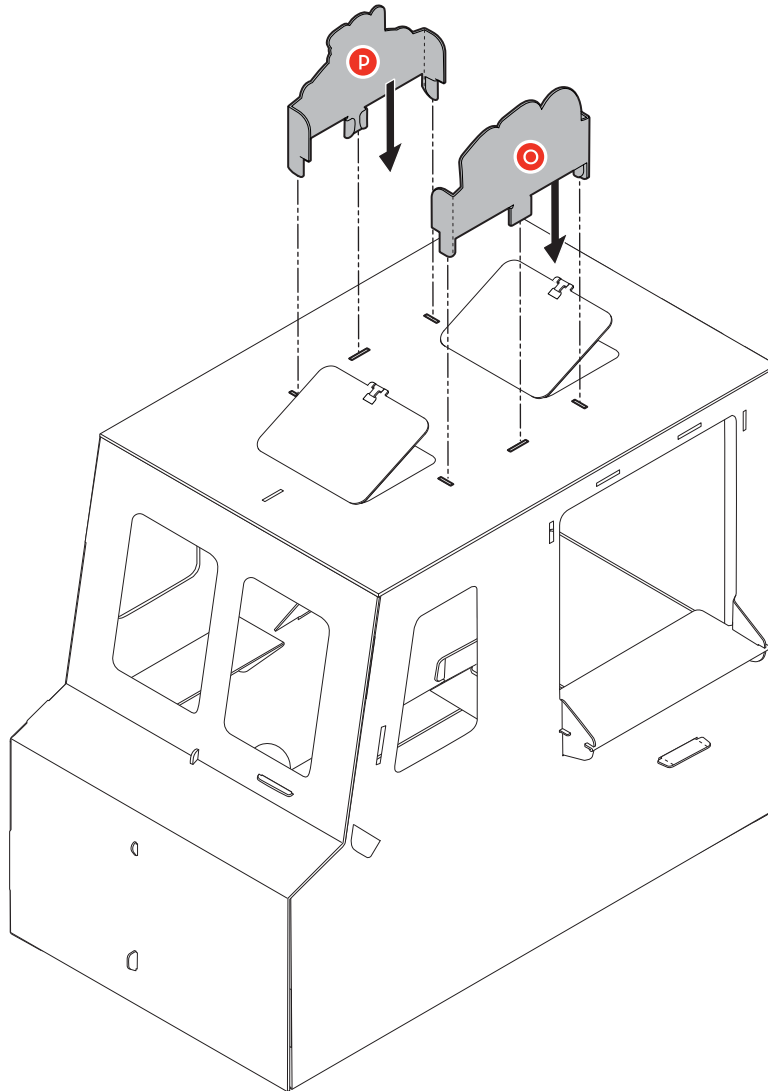
## STEP 12 - Let Your Inner Shelf Shine

- First, attach the front shelf (part M) and the back shelf (part N) to the inside of the passenger side panel.
- Second, once the tabs are through, re-thread them back into the truck through the remaining slots.



## STEP 13 - Pay Attention to the Signs

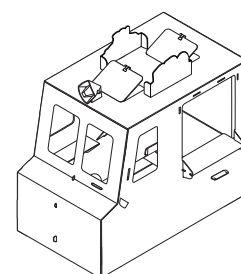
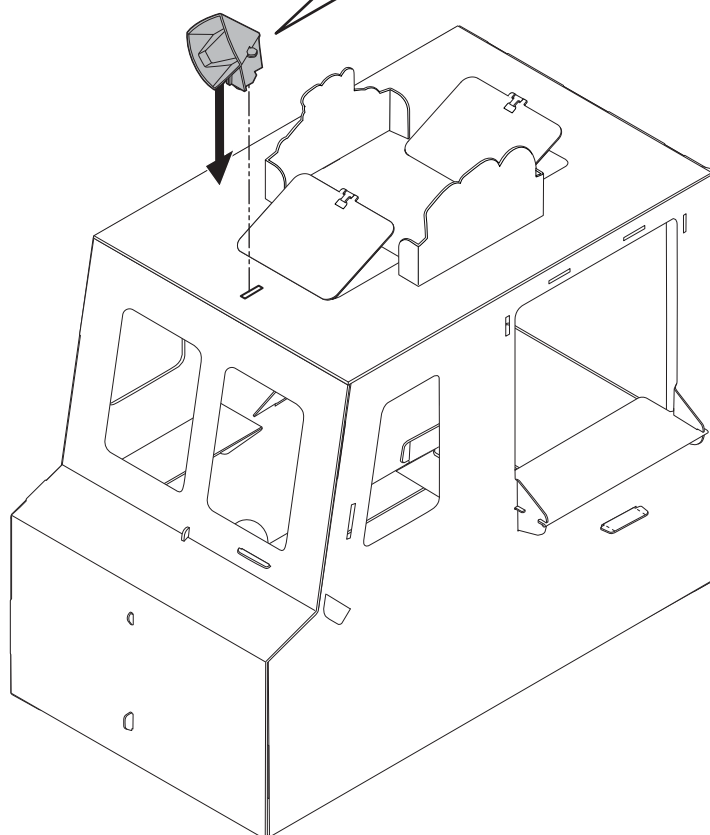
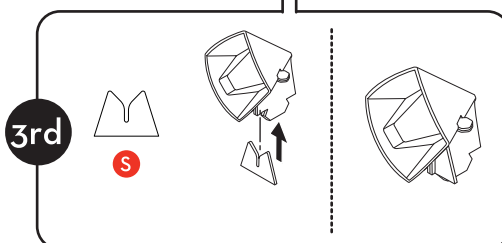
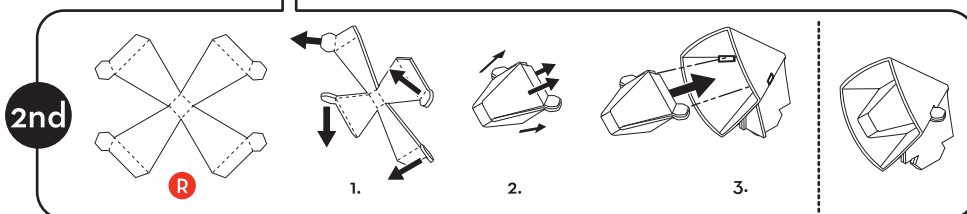
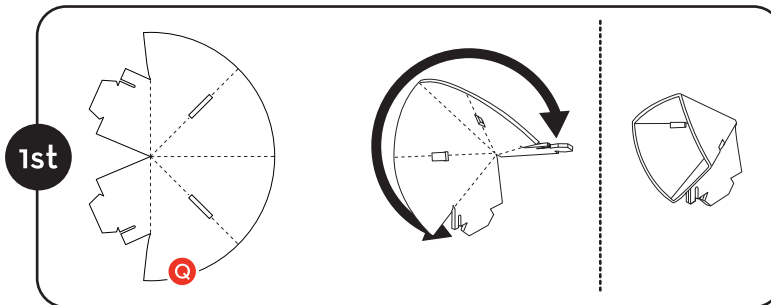
Attach the BBQ sign (part O) to the top driver side of the truck. Attach the ice cream sign (part P) to the top passenger side of the truck.



Assembled View

## STEP 14 - Speak Up

- First, fold the speaker casing (part Q) until tabs touch.
- Second, fold the speaker inner cone (part R) until tabs touch. Attach the speaker inner cone to the inside of the speaker casing.
- Third, slide speaker support (part S) onto base of the speaker casing.
- Finally, attach the speaker assembly to the roof of the truck.

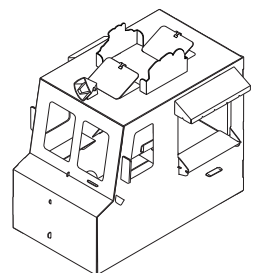
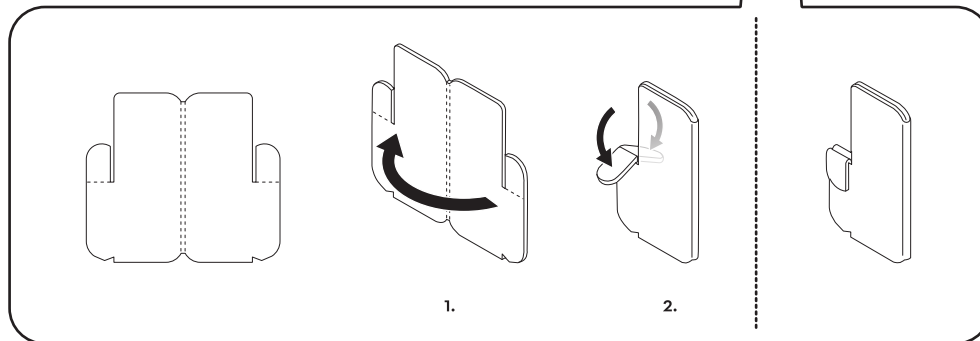
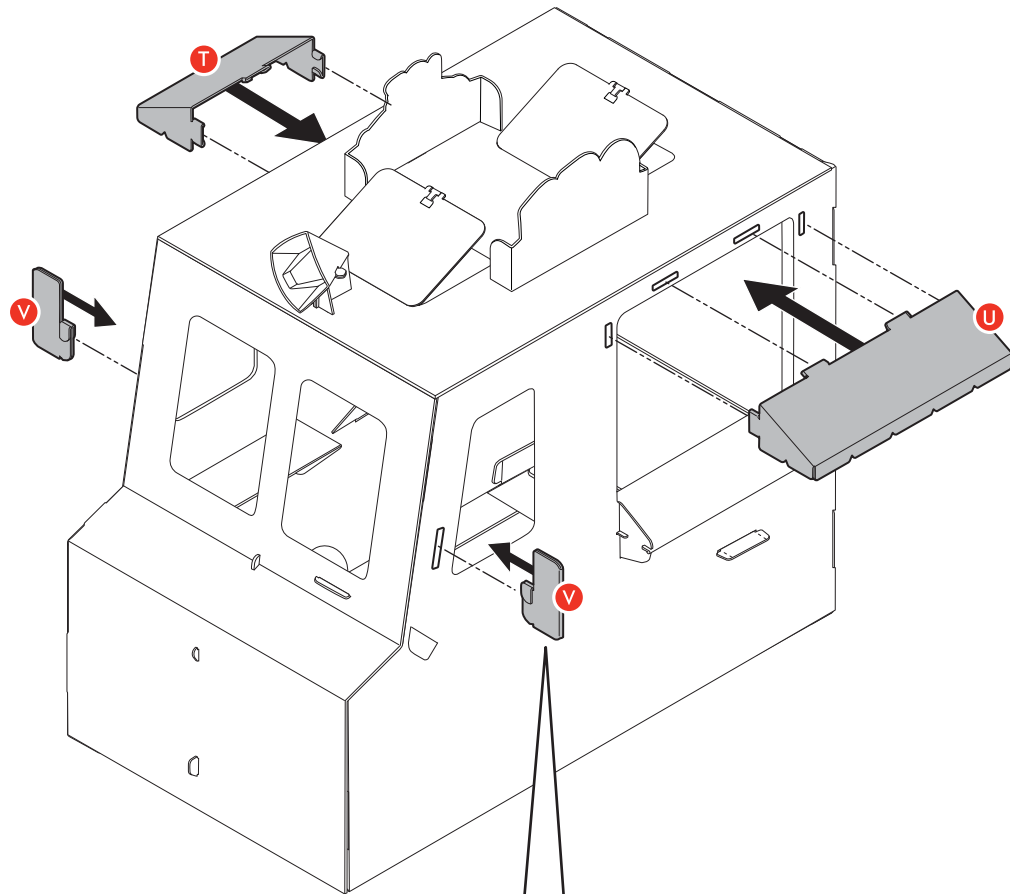


Assembled View



# STEP 15 - Awnings Are Awesome

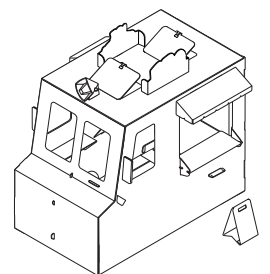
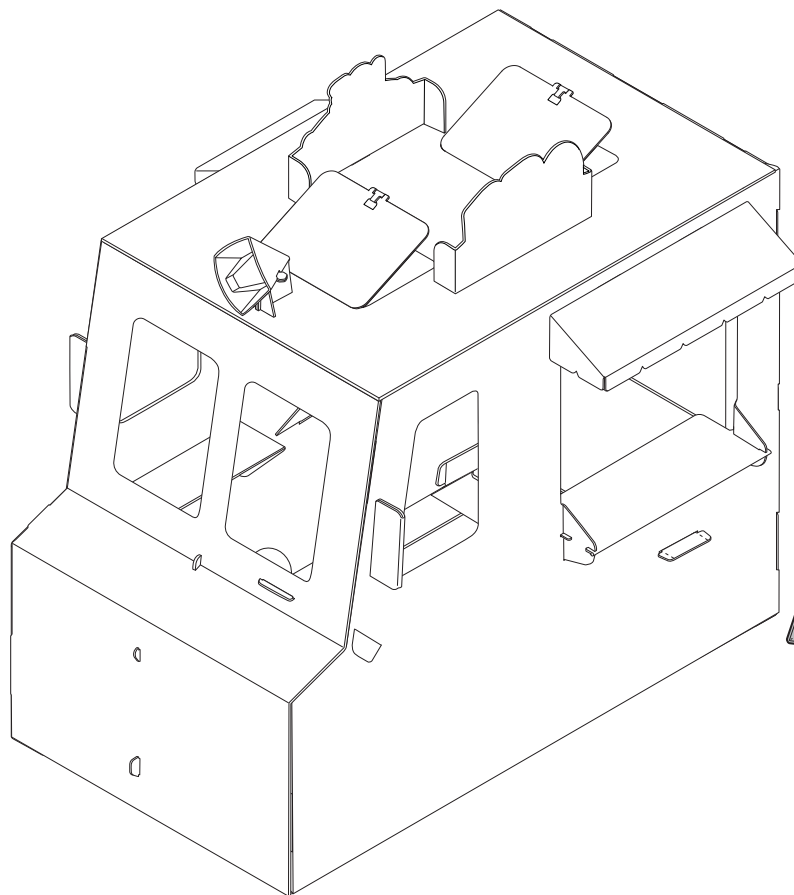
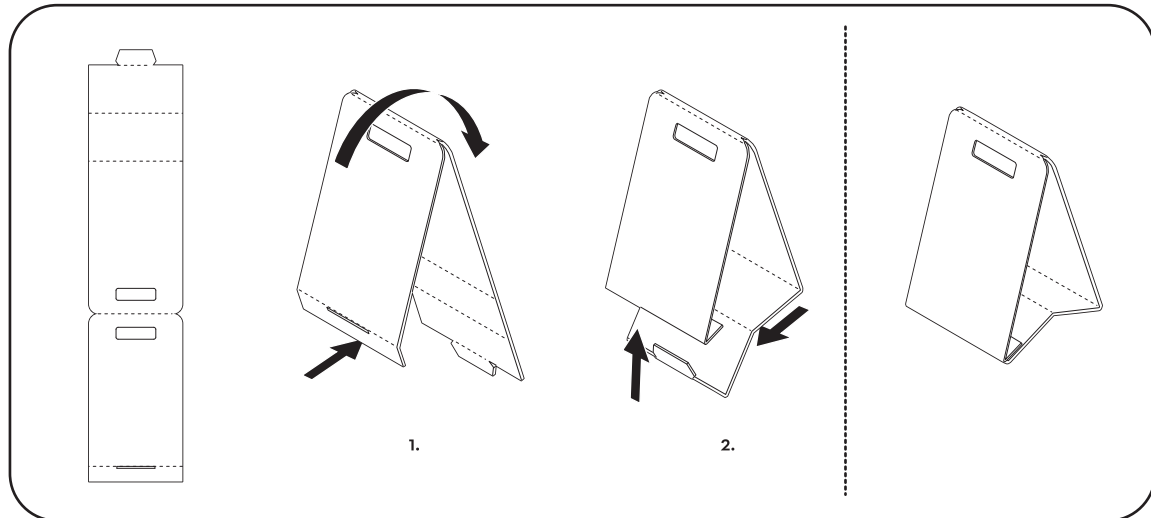
- Attach the ice cream awning (part T) and the BBQ window awning (part U) to the sides of the truck.
- Fold the rear view side mirrors (part V) as illustrated, then attach them to the truck with the mirror artwork facing the back of the truck.



Assembled View

# STEP 16 - What Fun – You're Done

Fold the sandwich board (part W)  
back and attach tab to the bottom  
slot.



Assembled View

Now the real fun begins—it's time to get playtime cooking and satisfy hungry imaginations! Check out the Imagination Launch Guide included with the playhouse for a message from Melissa and Doug, Countless Ways to Play, and much more.

[illegible][illegible]

