

# East Bethel Resident Guide



# ALPHABETICAL INDEX

## A

<a href="#">AA and Narcotics Anonymous</a> .....	26
<a href="#">Animal Licenses</a> .....	13
<a href="#">Anoka County Social Services</a> .....	17

## B

<a href="#">Before You Dig</a> .....	13
<a href="#">Boy, Girl, and Cub Scouts of America</a> .....	27
<a href="#">Burning Permits</a> .....	13

## C

<a href="#">Cedar/East Bethel Lions and Lioness Club</a> .....	26
<a href="#">Chamber of Commerce</a> .....	26
<a href="#">Churches/Places of Worship</a> .....	28
<a href="#">City Cemeteries</a> .....	19
<a href="#">City Meetings and Channel 10</a> .....	21
<a href="#">City Utility Services</a> .....	12
<a href="#">Clubs</a> .....	26
<a href="#">Community Centers</a> .....	9
<a href="#">Community Events</a> .....	10
<a href="#">Compost Sites</a> .....	15

## D

<a href="#">Dining/Entertainment</a> .....	9
<a href="#">DNR License Centers</a> .....	14

## E

<a href="#">East Bethel Bandits Baseball</a> .....	27
<a href="#">East Bethel City Council</a> .....	21
<a href="#">East Bethel City Maps</a> .....	5
<a href="#">East Bethel Senior Center</a> .....	26
<a href="#">Elected Officials and Contact Information</a> .....	22
<a href="#">Emergency Information</a> .....	17

## G

<a href="#">Get to know East Bethel</a> .....	4
---	---

## H

<a href="#">Head Start Preschool Program</a> .....	25
<a href="#">Home Improvements (Building Permits)</a> .....	13

## L

<a href="#">Library</a> .....	18
<a href="#">License Centers</a> .....	14

## N

<a href="#">Nature Reserves</a> .....	7
<a href="#">Newspapers</a> .....	18
<a href="#">North Anoka County Food shelf (NACE)</a> .....	17

## P

<a href="#">Parking Restrictions</a> .....	19
<a href="#">Parks</a> .....	6
<a href="#">Pet Clinics</a> .....	19
<a href="#">Post Offices</a> .....	18
<a href="#">Public Transportation</a> .....	20

## R

<a href="#">Recycling</a> .....	14
<a href="#">Recycling Events that the City Hosts</a> .....	16
<a href="#">Reserve Parks and Facilities</a> .....	5

## S

<a href="#">School Districts</a> .....	24
<a href="#">Soderville Athletic Association for Youth</a> .....	27
<a href="#">Start a Business in East Bethel</a> .....	19

## T

<a href="#">Thank you from East Bethel</a> .....	28
<a href="#">The History of East Bethel</a> .....	5

## V

## CATEGORIZED INDEX

### Community Information

[Get to Know East Bethel](#)..... 4  
[The History of East Bethel](#)..... 5  
[East Bethel City Maps](#)..... 5  
[Reserve Parks and Facilities](#)..... 5  
[Parks](#)..... 6  
[Nature Reserves](#)..... 7  
[Dining/Entertainment](#)..... 9  
[Community Centers](#)..... 9  
[Community Events](#)..... 10

### Licenses, Permits, & Utilities

[City Utility Services](#)..... 12  
[Before You Dig](#)..... 13  
[Home Improvements \(Building Permits\)](#)..... 13  
[Burning Permits](#)..... 13  
[Animal Licenses](#)..... 13  
[DNR License Centers](#)..... 14  
[License Centers](#)..... 14  
[Recycling](#)..... 14  
[Compost Sites](#)..... 15

### Services

[Recycling Events that the City Hosts](#)..... 16  
[Emergency Information](#)..... 17  
[Anoka County Social Services](#)..... 17  
[North Anoka County Food shelf \(NACE\)](#)..... 17  
[Library](#)..... 18  
[Post Offices](#)..... 18  
[Newspapers](#)..... 18  
[City Cemeteries](#)..... 19  
[Parking Restriction](#)..... 19  
[Pet Clinics](#)..... 19  
[Start a Business in East Bethel](#)..... 19

[Public Works](#)..... 19  
[Elected Officials](#)..... 20

[City Meet](#)  
[East Beth](#)  
[Elected O](#)  
[Voting.....](#)

**Educa**  
[School Dis](#)  
[Head Star](#)



..... 26  
[Club.....](#) 26  
..... 26  
..... 26  
..... 27  
..... 27  
[outh.....](#) 27  
..... 28

## **ING TO KNOW EAST BETHEL**

---

At the northern edge of the Minneapolis-St. Paul metropolitan area, the City of East Bethel is 48 square miles of lakes, wetlands, farms, and prairies. East Bethel offers a unique and very livable location for families. It provides the best of both worlds, convenience to a Metropolitan area and rural living.

East Bethel has 12 lakes covering 2,028 acres, including Coon Lake, the largest lake in Anoka County. There are always recreational amenities to experience when you have 15 City Parks, two community centers, one indoor ice rink, one outdoor ice rink, two golf courses, one disc golf course, a shooting range, and hunting, fishing, and snowmobiling opportunities. There are also public preserves that include Sandhill Crane Natural Area, Helen Allison Savanna, and the Gordie Mikkelson Wildlife Management Area.

Additionally, East Bethel is home to the [Cedar Creek Ecosystem and Scientific Reserve](#) which is managed by the U of M. This reserve is the meeting point of the three largest ecosystems in North America: the western prairies, the northern evergreens, and the leafy forests of the east. This site was ranked as an Ecologically Significant Area because of the remarkable combination of plants and animals in this 9-square-mile area. The habitats that are adjacent to Cedar Creek are just as important because they help to ensure the survival of this ecosystem, so landowners and the local government of East Bethel help to protect it.

Thank you for considering East Bethel when looking for a place to live, work, and raise a family. Over 12,000 people already have.

## **THE HISTORY OF EAST BETHEL**

---

### **1850'S**

The City of East Bethel was originally home to the Chippewa Nation. Settlement of this area by Europeans occurred first in the 1850's following the purchase of the Louisiana Territory by the United States in 1837. Settlers originated mainly from Sweden, Norway, England, Ireland, and New Brunswick. Many of these early settlers established homesteads near Cedar Creek.

- 1858** Bethel Township was organized in 1858, the same year that Minnesota became a state. At the time, it included all of what is now Linwood Township until 1871 when Linwood Township was organized.
- 1863** The East Bethel Post Office was established but was later moved to a site along the newly constructed Great Northern Railroad. Hugh Spence was the first postmaster in 1878.
- 1900-01** Working with townships to the south, Central Ave was created, which later became Hwy 65. It became a divided Hwy in 1969-1970.
- 1912** Anoka County Telephone Company of Constance was organized and lines were built through the township.
- 1913-1914** Cars were first used in this area.
- 1957** East Bethel Township was in the process of becoming a Village which took nearly two years. The first newspaper, a bi-weekly, the “East Bethel Booster” was also published.
- 1959** East Bethel became a legal municipality with a unanimous vote for incorporation by the Town Council. The population at the time was 1,286.
- 1960-70’s** East Bethel first experienced large growth in new residents in the 1960’s and a growth increase of 156 percent during the 1970’s. The growth leveled off in the mid 20 percent range by 1980 and remained there until 2000.
- 2000’s** By 2004 East Bethel’s population had grown to approximately 11,405. Proposed growth by 2010 was 12,600 and 18,400 by 2020. We have already exceeded the 2010 projection.

## EAST BETHEL CITY MAPS

City maps are available on the [East Bethel City webpage](#). Along with the Official City Map, there are Zoning, and Parks and Trails, and Warning Siren maps available.

## RESERVE PARKS AND FACILITIES

East Bethel has many [parks and facilities](#) that can be rented out such as community centers, pavilions or shelters, ball fields, horseshoe pits and concession stands. Call East Bethel City Hall to confirm availability, then fill out the [Facilities Request Form](#) and submit it along with payment to the City Hall. This form can be found at the East Bethel City website or at City Hall.

# EAST BETHEL PARKS



	Acres	Ball Fields	Basketball Courts	Community Center	Concession Stand	Hiking/Skiing Trails	Horseshoe Pits	Picnic Areas	Playground	Restrooms	Shelters/Pavilions	Skate Park	Sliding Hill	Soccer Fields	Swimming	Tennis Courts	Walking Paths	Warming House
Anderson Lake Park	4	*							*							*		
Bonde Park	13	*						*	*		*			*				
Booster East Park	50	*	*				*	*	*	*	*					*	*	*
Booster West Park	35	*			*			*	*	*	*	*						
Carlisle Park	3	*							*									
Cedar Creek Scientific Ecosystem Reserve	3					*												
Coon Lake Beach Park	.5		*	*					*		*	*			*			
Deer Haven Park	5		*						*		*							
Eagle Ridge Park	40																*	
Eveleth Park	3	*							*									
Hidden Haven Park	5							*	*		*	*					*	
John E Anderson Memorial Park	70							*	*	*	*				*		*	*
Maynard Peterson Memorial Park	3	*							*		*							
Norseland Manor Community Park	20	*						*	*				*					
Northern Boundaries 7 <sup>th</sup> St Park	5							*	*				*					
Oakbrook Acres Park	10												*					
Rod & Norma Smith Park	4	*	*						*		*							
Whispering Aspen Park	.5			*					*							*		
Whispering Oaks Park	2		*						*		*						*	

# NATURE RESERVES

## The Cedar Creek Ecosystem and Scientific Reserve

The [Cedar Creek Ecosystem and Scientific Reserve](#) is managed by the U of M. This reserve is the meeting point of the three largest ecosystems in North America: the western prairies, the northern evergreens, and the leafy forests of the east. This site was ranked as an Ecologically Significant Area because of the remarkable combination of



Cedar Creek Lake; Credit: U of M

plants and animals in this 9-square-mile area. The habitats that are adjacent to Cedar Creek are just as important because they help to ensure the survival of this ecosystem. Cedar Creek is only open to the public on guided tours (which can be set up via their website), but the [Fish Lake Trails](#) wind through several distinct ecosystems of Cedar Creek and is open to the public year round. Cedar Creek research is repeatedly featured in major media outlets, including the New York Times, the London Telegraph, National Public Radio, Public Television, and many more.

## Sandhill Crane Natural Area

The [Sandhill Crane Natural Area](#) is an inspiring example of what can happen when government agencies and area citizens become dedicated to a common purpose. In retrospect, the creation of this unique natural area in the city of East Bethel, Minnesota seems improbable at best. The 495-acre protected area comprises separate parcels of land owned by four different agencies at three levels of government: the City of East Bethel, Anoka County [Parks], the MN Pollution Control Agency, and the MN Department of Natural Resources (DNR). Over a period of six years, these government entities with their wide-ranging goals and responsibilities came together in recognition of the importance of safeguarding the area's biodiversity. The Minnesota County Biological Survey (MCBS) was a source of information for planning during the process, and helped convey the significance of the natural area to policy makers and citizens. As agency representatives worked side by side with area residents, a central vision for the future of the land became clear. Now, while the land continues to be held under divided ownership, it is united by collaborative management and by a name chosen in honor of one of the prominent members of the community.

The Sandhill Crane Natural Area supports six types of wetland communities, as well as prairie, oak savanna and oak forest. Besides sandhill cranes, bald eagles and Blanding's turtles have moved into the natural area in recent years. This public land lies at the heart of a larger, 1,590-acre area mapped by the MCBS. "So now," says Dunevitz, "there is this great situation in East Bethel: a protected natural area embedded within privately-owned lands that, from an ecological perspective, are of similar quality."



## Helen Allison Savanna



Helen Allison Savanna in winter; Credit: U of M

[Helen Allison Savanna](#) was named for Helen Allison Irvine, "Minnesota's grass lady," who wrote a text on the 180 grasses of Minnesota. This scientific and natural area lies within the Anoka sand plain, providing an excellent example of sand dune plant succession, with blowouts and dunes in various stages of stabilization by pioneer species. Community types found on the site include oak sand savanna, dry prairie with bur oak and pin oak, thickets of willow and aspen, and sedge marshes in scattered depressions. Trees and shrubs characteristic

of a savanna are found here: pin oak, bur oak, American hazelnut, choke cherry, willow, and quaking aspen. Other savanna species include lead plant, smooth sumac, slender willow, steeple bush, aster, and goldenrod. Look on the dunes for pioneer sand plants such as sea-beach needle grass and hairy panic grass. Sedge meadows contain tussocks of Hayden's sedge, along with marsh fern and blue-joint grass. Other rare plant species occurring here include long-bearded hawkweed, rhombic-petaled evening primrose, and tall nut-rush. Prime times to visit are when the pasque flowers bloom in the spring and when the prairie grasses are at their finest in late summer. This site is owned by The Nature Conservancy.

## The Gordie Mikkelson Wildlife Management Area

[Gordie Mikkelson Wildlife Management Area](#) is 816 acres in size and is primarily managed for woodland and wooded wetland wildlife like deer and turkeys. It consists of 55% wetland and wooded wetland, 36% upland woodland and 9% grassland/food plot. Mikkelson Wildlife Management Area has grown rapidly in size in recent years and was acquired from a variety of previous landowners. A large portion was previously operated as a Camp Fire USA children's camp.



White-tailed deer; Credit: USFWS

# DINING/ENTERTAINMENT IN EAST BETHEL

## /ENTERTAINMENT IN EAST BETHEL

**Support your local businesses!**

Beaverbrook Tri-County Sportsmen's Club.....763-434-4311.....20500 Palisade St NE

[Blue Ribbon Pines Disc Golf](#)..... 763-434-1644.....Klondike Dr NE

East Bethel Ice Arena..... 763-434-0397.....20675 Hwy 65 NE

EJ's Bottle Shop & Bar..... 763-434-5646..... 4832 Viking Blvd. NE

[Hidden Haven Golf Course](#)..... 763-434-6867.....20520 Polk St NE

[Moonshine Whiskey Pub & Saloon](#)..... 763-434-4682..... 21383 NE Ulysses St.

[East Bethel Emagine Theatre](#).....763-434-7256 ..... 18635 Ulysses NE

[Route 65 Pub & Grub](#).....763-413-3550 ..... 18407 Hwy 65 NE

[Smokey's Pub & Grill](#)..... 651-464-6046.....552 Lincoln Dr

Subway.....763-413-8844.....23705 Hwy 65 NE

[Viking Meadow Golf Course](#).....763-434-4205..... 1788 Viking Blvd NE

View the East Bethel City [Business Directory](#) or the [Chamber of Commerce](#) for more businesses.

## COMMUNITY CENTERS

### Coon Lake Community Center

The [Coon Lake Beach Community Center](#) is available to rent for parties, meetings, receptions, etc. They have a sound system, a large screen TV, and free WIFI. For more information visit their website or contact Keli Rabold at 952-261-7518.

### East Bethel Community/Senior Center

The [East Bethel Community/Senior Center](#) is available to rent for banquets, receptions, etc. The facility can accommodate up to 200 people. For more information contact Dennis Swen at 763-434-9244.

### Whispering Aspen Community Center

City Community Center is open to residents for gatherings and includes basketball and tennis courts. For more information call 763-367-7840.

# COMMUNITY EVENTS

## Booster Days Events and Parade

*East Bethel Booster Days is held annually during the summer and is a chance for East Bethel residents to get to know people in the area and spend a fun filled weekend with their families.*



Booster D

Photo by Nate Avshford, Public Works Manager, 2014

- Pancake breakfast
- Flag raising ceremony
- Craft and bake sale
- Quilt raffle
- Bingo
- Vintage car, truck, snowmobile, and tractor show
- Tractor pull
- Bounce houses
- Parade
- Children's parade
- East Bethel Scholarship Program Coronation

- Outside dance and live music
- Fireworks
- Lion's beer wagon
- Treasure hunt
- Food vendors
- 5k Run
- 1k Children's Run
- Silent auction
- Outdoor movie
- Special events by the Fire and Police Depts.
- Turtle races

Most of the events are held at the East Bethel Community Center and Booster Park located at 2241 221<sup>st</sup> Ave NE. The East Bethel Scholarship Program Coronation is held at the East Bethel Ice Arena.

We encourage all of our local businesses and organizations to participate in the parade. Parade entrant and vendor applications can be found on our website at [www.eastbethelboosterdays.com](http://www.eastbethelboosterdays.com) or picked up at City Hall.

More Booster Days information can be found on the [city webpage](#) or the [Booster Days Facebook page](#)!

## North Artists Studio Crawl

The [North Artists Studio Crawl](#) features several local artists and has an annual studio crawl where the local artists exhibit and sell their various styles of art. The crawl is a free, self-guided tour. Check out the [map](#), which shows all of the stops along the crawl!

## Coon Lake

Coon Lake is the largest lake in Anoka County. It has several public landings and a beautiful playground, and is an ideal destination for summer fun.



### Boat Landings

There are two (2) public boat landings on Coon Lake. We are the largest lake.

### Coon Lake Beach Events

Coon Lake Beach hosts several events including an annual [pig-roast and corn feed](#) in August, and [weekly Friday and Saturday meal rallies](#) at Smokey's Pub N'Grill!



## Martin-Island Linwood Lakes Regional Park

[The Martin-Island Linwood Lakes Regional Park](#) is a 737-acre park that is in close proximity to the [Carlos Avery Management Area](#). The park contains significant undisturbed landscape communities identified in the State's County Biological Survey. Facilities include nature trails, a small picnic area, rustic beach, and a group camp named [Camp Salie](#). The park remains mostly in a natural state.

## The East Bethel Event Calendar

View the [East Bethel Event Calendar](#) for more events!

## CITY UTILITY SERVICES

### Cable TV

Cable TV is provided by [Midco](#). You can reach customer service at 1-800-888-1300. Limited service area.

## Electric

Electric is provided by [Connexus Energy](#). You can reach them at 763-323-2660 for a power outage, or call 763-323-2650 for member services.

## Garbage/Recycle Haulers

### Residential Service:

<a href="#">Ace Solid Waste</a> .....	763-427-3110
<a href="#">East Central Sanitation (Waste Management)</a> .....	320-358-4078
<a href="#">Le Page &amp; Sons</a> .....	763-757-7100
<a href="#">SRC, Inc.</a> .....	651-462-5298

### Commercial Services

<a href="#">Ace Solid Waste</a> .....	763-427-3110
<a href="#">Le Page &amp; Sons</a> .....	763-757-7100
<a href="#">Walter's Recycling</a> .....	763-780-8464
<a href="#">Waste Management Inc. of MN</a> .....	952-890-1100

## Gas

The City of East Bethel is serviced by Centerpoint Energy/Minnegasco and Xcel Energy. Your gas provider is determined by your address.

<a href="#">Centerpoint Energy/Minnegasco</a> .....	612-372-4727
<a href="#">Xcel Energy</a> .....	800-895-4999

## Internet Providers

<a href="#">Century Link</a> .....	866-963-6665
<a href="#">Comcast/Xfinity</a> .....	800-934-6489
<a href="#">Frontier</a> (will assist you in finding service).....	888-855-5758
<a href="#">HughesNet</a> (satellite).....	800-921-8101
<a href="#">Midco</a> .....	800-888-1300
<a href="#">Dish Network</a> (satellite).....	888-221-7051

## Telephone

<a href="#">Century Link</a> .....	866-963-6665
<a href="#">Frontier</a> (will assist you in finding service).....	888-855-5758

## BEFORE YOU DIG



Call before you dig... Call [Gopher State One](#) to make sure you avoid utility lines underground. They will come and mark all of the utility lines underground for you.  
651-454-0002

## HOME IMPROVEMENTS (BUILDING PERMITS)

The city would like to remind everyone that most home improvement projects require building permits, including basement remodeling and additions, porches, decks, fences, sheds, roofing, and more. Structures that are constructed, moved, improved, demolished, or altered require a permit. Permits are required for electrical, plumbing, heating and air conditioning work as well.

Permit application forms and fees are available on our [website](#) or can be obtained at City Hall. Permits are required and inspections will need to be scheduled through City Hall, 763-367-7844. If you are using a contractor, then s/he may apply for the permit, but if you are filing for the permit yourself, you will need the contractor's license number. Your builder or remodeler must be licensed in the state of Minnesota. **It's the law!**

### Building Permits Protect Your Investment

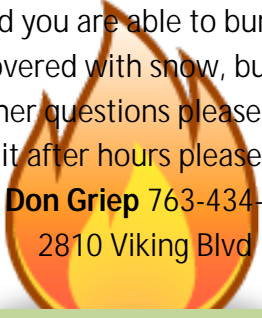
To some, obtaining a permit may seem to be unnecessary added costs, time delays, and unwarranted regulations. However, a building permit ensures that proper services and codes are being met. Residents may sometimes overlook the benefits of obtaining a building permit and appropriate inspections. In addition to assuring yourself that your family and property are protected, you will also have peace of mind in knowing that the work has been done properly and in accordance with all codes. Building without a permit may cause future maintenance problems or affect the resale of your home.

## BURNING PERMITS

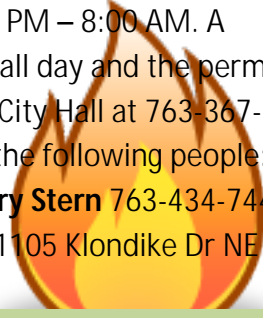
Burning permits are available at City Hall at no cost. Any fire larger than 3' x 3' requires a burning permit. The permits are good for 3 days and you are able to burn between 6:00 PM – 8:00 AM. A permit is still needed when the ground is covered with snow, but you may burn all day and the permits may last up to 10 days. If you have any further questions please feel free to call City Hall at 763-367-7840. If you need to obtain a burning permit after hours please contact one of the following people:



**Don Anderson** 763-434-4390  
4574 Wild Rice Dr NE



**Don Griep** 763-434-5979  
2810 Viking Blvd NE



**Gary Stern** 763-434-7442  
1105 Klondike Dr NE

## ANIMAL LICENSES

All dogs in the City of East Bethel are required to have a license and comply with the City ordinances. The forms to obtain a dog license are available at City Hall or online. There is no charge for the license; however proof of current rabies vaccinations is required. Residents are allowed 2 dogs per household before they are required to apply and obtain a kennel license. Cats are not required to be licensed in the City of East Bethel.

## DNR LICENSE CENTERS

You can purchase hunting and fishing licenses, cross-country ski passes, and snowmobile trail stickers through the Electronic License System (ELS) agents available in East Bethel.

**Go For It**

455 99<sup>th</sup> Ave NW, Suite 100B Coon  
Rapids, MN 55093

(651-395-2174)

## LICENSE CENTER

### Blaine Passport Center

10995 Club West Pkwy, Suite 600  
Blaine, MN 55449  
To set up an appointment, call  
763-767-3851.

### The Coon Rapids Passport Center

455 99<sup>th</sup> Ave NW, Suite 100B  
Coon Rapids, MN 55433  
To set up an appointment, call  
763-450-0014

### Ham Lake License Center

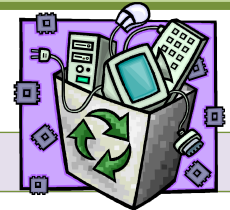
763-434-6542

17565 Central Ave NE, Ste. 330, Ham Lake, MN 55304

This license service center offers services for motor vehicles, driver's licenses, ID/permit/DNR Registration/Game and Fishing Licenses, vital statistics, county park pass, property tax payments, notary public, and cross country ski pass.

## RECYCLING

The City of East Bethel has curbside pickup, a drop off Recycling Center, and also sponsors a Recycling Day event.



### Scrap Metal/Recycle Materials

We would also like to encourage residents who sell scrap metal or recycle materials to save weight slips and provide a copy to the City. Any sales to vendors regardless of location can be counted towards our recycle goals as long as the City receives a copy of the weight slip from the sale. To make it more convenient to turn in weight slips, collection boxes have been placed at the Recycling Center, and City Hall. Providing a copy of the weight slips will greatly assist our efforts to meet our tonnage goals for the year. If you have any questions please contact City Hall at 763-367-7840.

### Anoka County Household Hazardous Waste Facility

3230 101<sup>st</sup> Ave NE, Blaine MN

There is no charge to drop off automotive products, home improvement products, household products, lawn and garden products, or any product that is labeled with any of the following words:

- Caution
- Combustible
- Corrosive
- Danger
- Flammable
- Inflammable
- Poison
- Toxic
- Warning

#### Hours:

April-October:

Monday: 9am-3pm

Wednesday: 2pm-8pm

Friday and Saturday: 9am-3pm

November-March:

Wednesday: 2pm-8pm

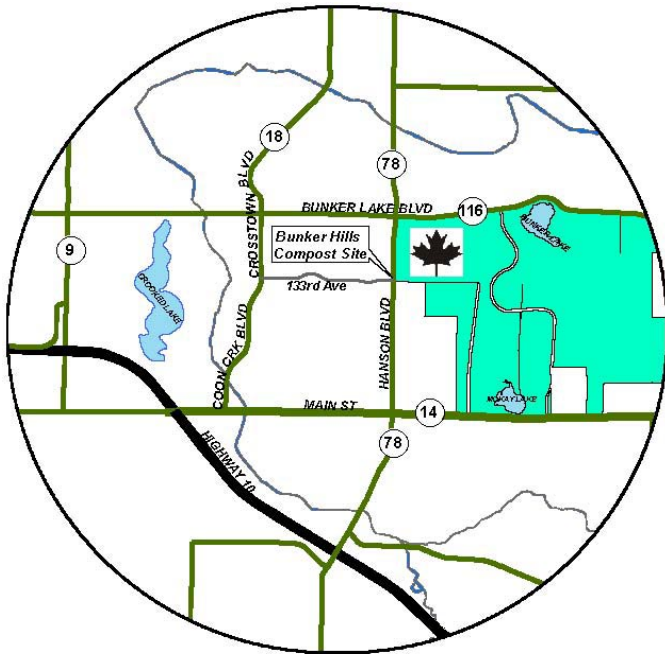
Saturday: 9am-3pm



- Compost Sites

## Bunker Hills Compost Site

763-767-7964



**Location:** 13285 Hanson Blvd, Coon Rapids, one mile north of 242 (Main Street).

**Hours of operation:** April – November:

Monday - Friday: 10am – 7pm

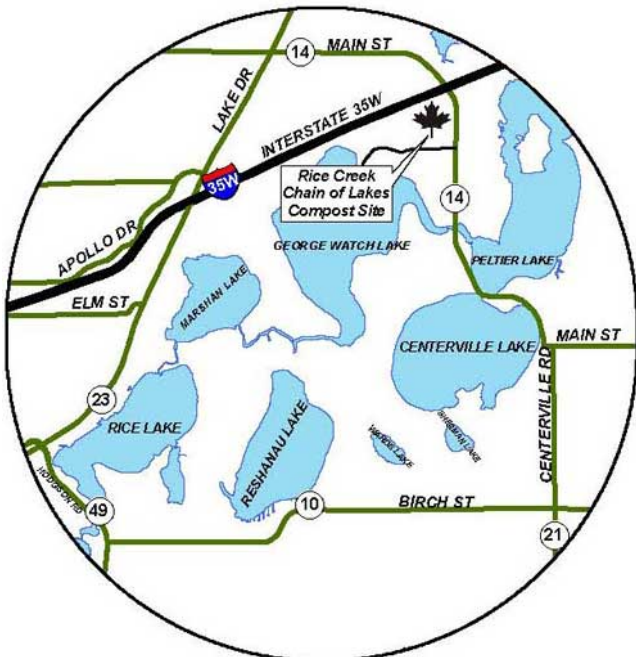
Saturday: 9am – 5pm

Sunday: 12pm – 5pm

\*Anoka County has two compost sites accepting yard waste and organics year-round weather permitting. Please see hours of operation. **You must unload your own yard waste and debag all materials.** Please keep leaves/grass, tree waste and organic materials separate from each other because they are deposited in different areas

## Rice Creek Chain of Lakes Compost Site 651-429-3723

Location: 7701



Main St, Lino Lakes, south of 35W off CSAH 14 (Main Street), there is no exit from 35W to County Road 14, use the Lake Drive (CSAH 23) exit from 35W and take Lake Drive north to Main Street.

**Hours of operation:**

April – November

Monday closed

Tuesday 10:00am – 7pm

Wednesday closed

Thursday 10:00am – 7pm

Friday closed

Saturday 9:00am – 5:00pm

Sunday 12:00pm – 5:00pm

December-March:

Saturday: 9am-1pm

Closed holidays.

## RECYCLING EVENTS HOSTED BY THE CITY

Drop-Off Saturdays

Located at the Recycling Center on Viking Blvd

A Drop-Off Saturday event is offered on the last Saturday of every month, from 9:00 AM - 12:00 PM (noon) at our Recycling Center. Appliances, automotive batteries, electronics, tires, and TVs are all accepted on these days. Please note: No garbage or household hazardous waste will be accepted. Some items are accepted free of charge; there is a small fee for other items. Please see our most recent [Drop-Off Saturday flyer](#) for more detailed information.

**We will collect:**

- Automotive Batteries
- Fluorescent Bulbs
- Tires - fee
- TVs - Small
- Large TVs are 28"+ and/or consoles -fee
- Computer, Vacuum, Fax, Scanner, Printer, CD/DVD/VCR player, Cordless tool, etc.
- Dishwasher, Furnace, Humidifier, Microwave, Washer, Dryer, Refrigerator, Air Conditioner, etc.
- Glass, paper products, aluminum cans, (tin cans 2x a year) scrap metal, used oil/oil filters, antifreeze

**City Recycling Event**

**Located at the East Bethel Ice Arena**

The city also holds a Recycling event that is larger and accepts a wider variety of materials for recycling. Watch for advertisement in the [City newsletter](#) or call City Hall for dates, times, and pricing for acceptable items. Detailed information for this event can also be found on the city website under services/garbage & recycling/recycling events.

**East Bethel City Hall accepts these recyclables on a daily basis:**

Drop off these items at East Bethel City Hall from 8am to 4pm.

- Batteries (not automotive)
- Cell Phones
- Eyeglasses
- Hearing Aids
- Worn and Torn flags (to be retired)
- \*Computer Cartridges- inkjet and laser
- \*Fishing rods or reels, used or new
- \*Weight Slips

For additional information on recycling in East Bethel, please call City Hall at 763-367-7840.

**EMERGENCY INFORMATION**

**City of East Bethel Fire Department**

The Fire Department's primary responsibility is fire suppression, rescue, fire inspections, arson investigations, fire prevention and to provide first responder medical care for the sick and injured. They protect approximately 13,000 citizens over an area of about 48 square miles. The City has an 8 mile stretch of state highway 65 running north and south that brings about 32,000 motorists daily through our City. Our active mutual aide/auto aide programs ensure sufficient resources from and for our neighboring fire departments.

Our volunteer firefighters provide 24 hour-a-day response from three stations.

- 1) Station 1 is located at 2751 Viking Blvd. NE
- 2) Station 2 is located at 2375 221<sup>st</sup> Ave. NE
- 3) Station 3 is located at 342 Forest Road



For more information about the East Bethel Fire Department, please call 612-328-6833 or email Chief Mark DuCharme at [mark.ducharme@ci.east-bethel.mn.us](mailto:mark.ducharme@ci.east-bethel.mn.us).

## Police Services

The City of East Bethel contracts through Anoka County for Public Safety Services. **If you have an emergency, dial 911.** Otherwise, please feel free to call the Anoka County Sherriff's non-emergency number at 763-427-1212 with any comments, concerns, problems or complaints.

Sheriff James Stuart and his staff of over 300 employees and volunteers serve Anoka County, the 4th largest county in the state.

## ANOKA COUNTY SOCIAL SERVICES

Anoka County provides social services such as Senior, Child, and Mediation Services. Contact them at (763) 421-4760 or at [www.anokacounty.us/1059/Human-Services](http://www.anokacounty.us/1059/Human-Services)

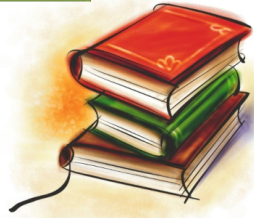
## NORTH ANOKA COUNTY EMERGENCY FOOD SHELF

The North Anoka County Emergency food shelf (NACE) is in partnership with all available and willing resources, and they strive to curb suffering from hunger in our communities by providing balanced nutrition to all people who are truly in need. If you would like to visit the food shelf, bring an ID and a piece of mail with the current address. You may visit once every 60 days. Please call for further information: 763-434-7685.

## ANOKA COUNTY LIBRARY

### North Central Branch

17565 Central Ave NE  
Ham Lake, MN 55304  
763-324-1570



### St. Francis Branch

3519 Bridge St NW  
St. Francis, MN 55070  
763-324-1580

## POST OFFICES

### Bethel Post Office

763-434-3000  
103 Main St NW  
Bethel, MN 55005

Hours: Monday-Friday 6:30am -5:00pm  
Saturday 6:30am - 12:00pm  
Sunday Closed

### St. Francis Post Office

763-753-3435  
3726 Bridge St NW  
St. Francis, MN 55070

Hours: M-F 8:30am - 12pm,  
1pm - 4:30pm;  
Sat. 9:30am – 11:45am

### Cedar/East Bethel Post Office

763-434-7200  
21427 Aberdeen St NE  
Cedar, MN 55011  
Hours: M-F 8:30am – 5pm ;Sat. 9am – 12pm

### Wyoming Post Office

651-462-5252  
26824 Felton Ave  
Wyoming, MN 55092  
Hours: M-F 8:30am – 5pm ;  
Sat. 10am– 12pm

## NEWSPAPERS

### Anoka County Union Herald: The City's official newspaper

4101 Coon Rapids Blvd. NW, MN 55433 (763) 421-4444

### East Bethel Newsletter: FREE publication

2241 221<sup>st</sup> Ave. NE, East Bethel, MN 55011 (763) 367-7840



## CITY CEMETERIES

### East Bethel Cemetery

2401 221<sup>st</sup> Ave NE  
East Bethel, MN 55011

East Bethel, MN 55011

19700 East Bethel Blvd  
East Bethel, MN 55011

### Old Bethel Cemetery

### Oak Leaf Cemetery

1610 245th Ave NE

For more information on purchasing a plot or other cemetery questions, please contact City Hall at 763-367-7840.

## PET CLINICS

East Bethel offers a pet clinic once a year to offer vaccinations and tests for your dogs and cats. See the [Pet Clinic flyer](#) for prices on the East Bethel City Hall website or follow the link. Heartworm and flea/tick products will be sold at this event. East Bethel Dog licenses will be available.



## START A BUSINESS IN EAST BETHEL

East Bethel is 48 sq. miles of scenic Central Minnesota real estate, with a diverse population. Find the right programs, tools, and services for your business idea or expansion.



East Bethel City Hall offers a Business Resource and Financial Assistance Directory to help new or expanding businesses locate in East Bethel. You can request a copy by calling or visiting City Hall.

### **For assistance, contact the Community Development Department:**

Stop in: 2241 221st Ave. NE, East Bethel, MN 55011

Phone: (763) 367-7855

Fax: (763) 434-9578

Email: [Stephanie.Hanson@ci.east-bethel.mn.us](mailto:Stephanie.Hanson@ci.east-bethel.mn.us)

## PARKING + WINTER PARKING RESTRICTIONS

**Day Time Restrictions:** No parking on any public street between 6 am and 6 pm on any day with an accumulation of 2 or more inches of snow during the preceding 24-hour period commencing as of 4 am on the day of the parking restriction.

**Night Time Restrictions:** No parking on any public street between 11 pm and 6 am on any day from November 1<sup>st</sup> to March 31<sup>st</sup>.

**City crews typically start plowing by 2am if there is snow accumulation of two (2) or more inches. By not parking your vehicle on a city street it will ensure more effective plowing.** Vehicles on public streets may not be stopped, parked, or left standing upon any street for a continuous period of more than 24 hours.

## PUBLIC TRANSPORTATION

### Dial-a-Ride

[Dial-a-Ride](#) is a door-to-door transportation system in Northern Anoka County that is available in East Bethel. Mini buses, equipped with wheelchair lifts and accessible to the disabled, are available to everyone regardless of age or income.

A trip less than 10 miles is \$2.25 each way,  
between 10 and 20 miles is \$4.50 each way,  
and more than 20 miles is \$6.75 each way.  
ADA-certified riders pay a maximum of \$4.50 per direction.



You must make reservations at **LEAST** four (4) days in advance. For more information or to make reservations, call 651-602-LINK (5465).

**Group Trips:** Daycares, nursing homes, senior community centers, etc can request group trips and receive a discounted fare.

### Anoka County Medlink (formerly Anoka County Volunteer Transportation)

Anoka County Medlink coordinates volunteers to provide rides to and from medical, dental, and social service appointments for veterans, seniors (60+), or a client of Anoka County. Transportation is provided to clinics, Anoka County buildings and Veterans Administration medical facilities in and around the Twin Cities. Medical and dental trips may be made throughout the metro area while appointments with social services must remain within Anoka County. Passengers must be able to travel independently as volunteers are unable to provide assistance.

To register, please call reservations at 763-324-3255. Once registered, call in your request and provide your name, destination name and address, date, time, and approximate length of the appointment. Your request must be received by noon on Wednesday of the week prior to your appointment. Rides are provided Monday-Friday 8:00-4:30 p.m. When scheduling your appointment, keep in mind that the volunteers do not leave their homes before 8:00 a.m. and need to be off the road by 4:30 p.m. A donation to the program is not required to receive a ride but are accepted.

## CITY MEETINGS AND CHANNEL 10



**City Council Meeting** – The City Council Meetings are held the 2<sup>nd</sup> and 4<sup>th</sup> Monday of the month at 7:00 PM at City Hall. The City Council Meetings are broadcast live on Channel 10 and YouTube, and are played back on Channel 10 at the following times:

Sunday.....	9:00 AM and 5:00 PM
Monday.....	9:00 AM and 1:00 PM
Tuesday.....	1:00 PM and 5:00 PM
Wednesday.....	11:00 AM and 3:00 PM
Thursday.....	9:00 AM and 1:00 PM
Friday.....	11:00 AM and 7:00 PM
Saturday.....	9:00 AM and 5:00 PM

**EDA - Economic Development Authority** - The EDA meets once a month on the 3<sup>rd</sup> Monday of the month at 7:00 PM. The purpose of the EDA is to coordinate and administer economic development and redevelopment plans and programs for the City of East Bethel. The EDA is governed by a board of seven commissioners.

**Park Commission Meeting** – The Park Commission Meeting is held the 2<sup>nd</sup> Tuesday of the month at 6:30 PM at City Hall. The Park Commission consists of 7 members and they act as the planning agency for the City parks and trails systems.

**Planning Commission Meeting** – The Planning Commission meets once a month on the 4<sup>th</sup> Tuesday at 7:00 PM at City Hall. The Planning Commission consists of 7 members and deals with land use issues for City development, variances, conditional or interim use permits, and zoning text or map amendments.

## EAST BETHEL CITY COUNCIL

**Mayor Steve Voss**

651-308-0198

Term ends 12/31/2022

**Tim Harrington**

763-434-0909

Term ends 12/31/2022

**Suzanne Erkel**

612-240-9495

Term ends 12/31/2022

**Brian Mundle**

763-227-0120

Term ends 12/31/2024

**Wanda McLaurin**

610-368-7077

Term ends 11/8/2022\*

*\*until the next City election*

There is a 2-year term for Mayor Seat and a 4-year term for Council Members.

**ELECTED OFFICIALS AND CONTACT INFORMATION**

**Governor Tim Walz**

[www.mn.gov/governor/](http://www.mn.gov/governor/)

130 State Capitol

75 Rev. Dr. Martin Luther King Jr Blvd

St. Paul, MN 55155

651-201-3400

**U.S. Senator Amy Klobuchar**

[www.klobuchar.senate.gov](http://www.klobuchar.senate.gov)

302 Hart Senate Office Building

Washington, DC 20510

(202) 224-3244

**U.S. Senator Tina Smith**

[www.smith.senate.gov/](http://www.smith.senate.gov/)

60 East Plato Blvd, Suite 220

Saint Paul, MN 55107

651-221-1016

**U.S. Representative Tom Emmer**

[www.emmer.house.gov](http://www.emmer.house.gov)

9201 Quaday Ave NE, Suite 206

Otsego, MN 55330

763-241-6848

**State Senator Michelle Benson**

[www.senate.mn](http://www.senate.mn)

95 University Ave. W

MN Senate Building, Room 3109

St. Paul, MN 55155

(651) 296-3219

[sen.michelle.benson@senate.mn](mailto:sen.michelle.benson@senate.mn)

**State Representative Cal Bahr**

[www.house.leg.state.mn.us](http://www.house.leg.state.mn.us)

387 State Office Bldg.

100 Rev. Dr. Martin Luther King Jr Blvd

St. Paul, MN 55155

651-296-2439

[Rep.cal.bahr@house.mn](mailto:Rep.cal.bahr@house.mn)

**Attorney General Keith Ellison**

[www.ag.state.mn.us](http://www.ag.state.mn.us)

Minnesota Attorney General's Office

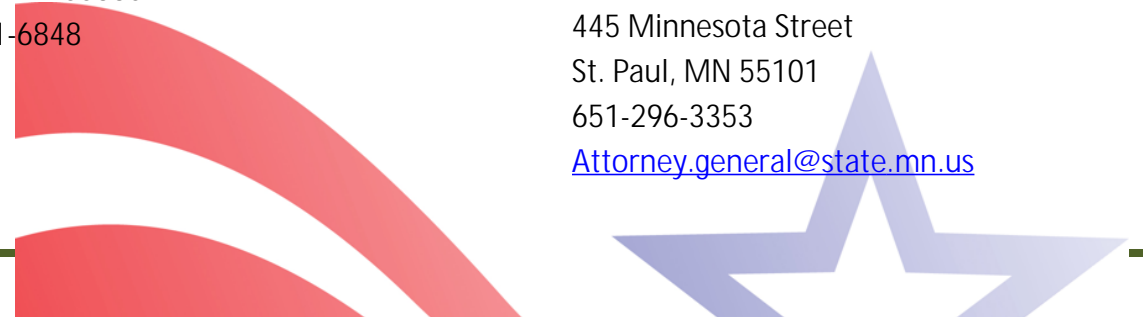
1400 Bremer Tower

445 Minnesota Street

St. Paul, MN 55101

651-296-3353

[Attorney.general@state.mn.us](mailto:Attorney.general@state.mn.us)





Secretary of State Steve Simon

[sos.state.mn.us](http://sos.state.mn.us)

180 State Office Bldg.

100 Rev. Dr. Martin Luther King Jr Blvd



## VOTE

The City of East Bethel currently has three precinct

### Precinct # 1

**East Bethel Community/Senior Center**

2241 221<sup>st</sup> Ave NE  
East Bethel, MN 55011

### Precinct # 2

**Our Saviour's Lutheran Church**

19001 Jackson St NE  
East Bethel, MN 55011

### Precinct # 3

**East Bethel Fire Station**

2751 Viking Blvd NE  
East Bethel, MN 55092

If you are unsure which precinct you are in, call City Hall at 763-367-7840. You can also look up your polling place location on the Secretary of State's website at <http://pollfinder.sos.state.mn.us>.

### Get Registered!

Before you can vote, you need to be on the official list of voters. This is called being “registered”. You need to register if you just became eligible to vote, moved, changed your name, or haven’t voted in the last four years. Voter registration cards are available at City Hall, on our website, or from the Elections Department at the Anoka County Government Center. They are also available where you apply for, renew, or change you Minnesota Driver License or ID card.

To register on Election Day at your polling place, you will need proof of your identity and proof of the address where you are living on Election Day.

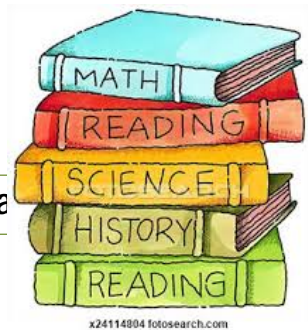
## SCHOOL DISTRICTS

### First Baptist Church & Christian School K-12

22940 St. Francis Blvd NW, St. Francis (763) 753-1230

### Forest Lake District 831

[www.forestlake.org](http://www.forestlake.org)



#### Linwood Elementary School

21900 Type Creek Dr NE  
Wyoming, MN 55092  
School hours: 9:15am – 3:30pm  
Main office: 651-982-1900  
Absentee line: 651-982-1956

Principal: Jim Caldwell  
651-982-1901  
Office hours: 7:30am – 4pm

#### Columbus Elementary School

17345 Notre Dame Street  
Columbus, MN 55025  
School hours: 9:15am – 3:30pm  
Main phone: 651-982-8900  
Absentee line: 651-982-8905

Principal: Neal Fox  
651-982-8902  
Office hours: 7:30am – 4pm

#### Southwest Junior High

943 SW 9<sup>th</sup> Ave  
Forest Lake, MN 55025  
Main Line: 651-982-8700  
Absentee line: 651-982-8703

Principal: Scott Geary  
651-982-8701  
Office hours: 7am – 4pm  
School hours: 7:40am – 2:10pm

#### Century Junior High

Principal: John-Paul Jacobson

21395 Goodview Ave N  
Forest Lake, MN 55025  
Main Phone: 651-982-3000  
Absentee line: 651-982-3012

**Forest Lake Area High School**

6101 Scandia Trail N  
Forest Lake, MN 55025  
Main phone: 651-982-8400  
Absentee line: 651-982-8414

651-982-3100  
Office hours: 6:45am – 3:45pm  
School hours: 7:42am – 2:10pm

Principal: Steve Massey  
651-982-8401  
Office hours: 6:30am – 4pm  
School hours: 8am – 2:30pm

**Star of the North Academy Charter School**

1562 Viking Boulevard NE, East Bethel, MN 55011 763-450-5560

**St. Francis District 15**

[www.stfrancis.k12.mn.us](http://www.stfrancis.k12.mn.us)

**Cedar Creek Community School**

21108 Polk Street NE  
Cedar, MN 55011  
763-213-8780  
Absentee line: 763-213-8831

Principal: Shelley Gilmore  
763-213-8781  
Office hours: 8am – 4pm  
School hours: 9:10am – 3:40pm

**East Bethel Community School**

21210 Polk Street NE  
Cedar, MN 55011  
Main phone: 763-213-8900  
Absentee line: 763-213-8931

Principal: Angela Scardigli  
763-213-8901  
Office hours: 8am – 4pm  
School hours: 9:20am – 3:40pm



**St. Francis Middle School**

23026 Ambassador Blvd NW  
St. Francis, MN 55070  
Main phone: 763-213-8500  
Absentee line: 763-213-8531

Principal: Beth LaCoursiere  
763-213-8501  
Office hours: 7am – 4pm  
School hours: 7:45am – 2:12pm

**St. Francis High School**

3325 Bridge Street NW  
St. Francis, MN 55070  
Main phone: 763-213-1500  
Absentee line: 763-213-1531

Principal: Douglas Austin  
763-213-1501  
Office hours: 7am – 3:30pm  
School hours: 7:45am – 2:25pm

**HEAD START EARLY LEARNING PROGRAMS**

Head Start is a high quality early learning program, serving children birth to 5 years old and families in Anoka County. Head Start provides education, health, nutrition and social service assistance to children and their families who are income eligible. A variety of programs are available at no cost. For more

information and to obtain an application, call Anoka/Washington County Head Start Program at 763-783-4300 or visit the website at [www.accap.org](http://www.accap.org) All families are encouraged to apply even though it is an income based program. Children with disabilities, special needs, in the foster care system, or who are homeless are given priority for enrollment.

### Highlights of Head Start:

- Ongoing registration
- Free program including free meals
- Field trips and special events
- Family and Community Partnerships
- Family literacy
- Education and transistioning
- Screenings
- Health and mental health services
- Medical and dental sevices
- Services for children with special needs
- Limited transportation within bus boundaries

## CLUBS & ORGANIZATIONS

### East Bethel Chamber of Commerce

The mission of the East Bethel Chamber of Commerce is to facilitate business relationships and opportunities, to advocate on behalf of their members to governmental bodies and the general public, and to promote the best interests of their



membership.

For \$75 per year you can become a member of the East Bethel Chamber of Commerce. Visit their website for more information at [www.eastbethelchamber.com](http://www.eastbethelchamber.com)

### Cedar/East Bethel Lions and Lioness Club

The Cedar East Bethel Lions were chartered in 1975. Our members have a strong sense of community responsibility. We believe our first responsibility is to the people of Cedar-East Bethel and we are proud of the reputation we have in this area. We work hard, but also believe it is important to have fun times to faciliate the cohesiveness of our group. If you are looking for a way to serve the Cedar-East Bethel community and develop some friendships in the process, come and visit one of our meetings. Call Judy Ricke at 763-226-4893 for information on the Lions Club, and for Lioness information call Yvonne Johnson at 763-434-6985.

### East Bethel Senior Center

All seniors are welcome to join for only \$10 per year.

Events are held at the [East Bethel Senior Center](#) at 2241 221<sup>st</sup> Avenue NE.

- Second Wednesday of each month: crafts and potluck from 9am to noon
- Third Thursday of each month: business meeting and noon lunch
- First Friday of every month: A dance is held from 1pm-4pm
- Second Sunday of each month: Pancake breakfast from 8:30am to noon

## Alcoholics Anonymous & Narcotics Anonymous

If you or someone you know has a problem, encourage them to seek help and attend a meeting.

Alcoholics Anonymous	Horizons Community Church	1503 157th Ave, Ham Lake, 55304	7:30 PM	Tuesday
Into Action II	Glen Cary Lutheran Church	15531 Central Avenue NE, Ham Lake, MN 55304	6:30 PM	
Narcotics Anonymous	Our Saviours Lutheran Church	19001 Jackson Street NE, East Bethel, MN 55011	6:30 PM	Friday
Narcotics Anonymous	Our Saviours Lutheran Church	19001 Jackson Street NE, East Bethel, MN 55011	7:00 PM	Monday
Narcotics Anonymous	Coon Lake Beach Community Center	182 Forest Rd NE East Bethel, MN 55092	7:00 PM	Tuesday

## The Boy Scouts of America

Age 11+

The Boy Scouts of America are one of the nation's largest and most prominent values-based youth development organization. The BSA provides a program for young people that builds character, trains them in the responsibilities of participating citizenship, and develops personal fitness. The BSA has helped build the future leaders of this country by combining educational activities and lifelong values with fun.

To get involved, visit the **East Bethel Boy Scout Troop 733** webpage at <https://www.facebook.com/groups/troop733/>

Character Development  
Sportsmanship and Fitness  
Family Understanding  
Respectful Relationships  
Personal Achievement  
Friendly Service  
Fun and Adventure

## The Cub Scouts of America

Boys aged 5-10

This program emphasizes shared leadership, learning about the community, family understanding, character development, citizenship training, and personal fitness. To get involved, contact Cubmaster John Austin at 651-399-9831.

## The Girl Scouts of America

K-12

Girl Scouts earn badges, hike and camp, participate in the cookie program, and much more. They improve neighborhoods, protect the planet, design robots, and establish sports clinics.

To get involved, visit the **Forest Lake Girl Scout Troop 56610** webpage at <http://www.scoutlander.com/publicsite/unithome.aspx?UID=21225>

## East Bethel Bandits Baseball

Ages 16 & up

The East Bethel Bandits are part of the Metro Mini Baseball League and are always looking for new players to fill out the roster. All new players will be given a chance to play. Players from East Bethel and

surrounding areas are welcome. Returning player fee is \$100 and the new player fee is \$150. The season starts as early as May and games are played on the St. Francis High School baseball field. To participate, contact Dallas Jelmberg at 763-286-5570 or email him at [eastbethelbanditsbaseball@yahoo.com](mailto:eastbethelbanditsbaseball@yahoo.com)

### **Soderville/Blaine Athletic Association for Youth**

Soderville/Blaine Athletic Association (SBAA) provides in-house level (recreational) youth baseball and fastpitch softball, and traveling (competitive) level fastpitch softball opportunities to children in many communities. SBAA provides youth sports experience to kids residing in East Bethel and the surrounding areas. For over 50 years, SBAA has provided opportunities for a rich youth sports experience in our community. The SBAA Board of Directors is committed to not only upholding this history, but also to strive to improve on this experience each year. To participate, contact Corryn Anderson at 763-413-3555.

## **CHURCHES / PLACES OF WORSHIP**

### **Bethel Community Church**

23860 Dewey St. NW, Bethel, MN 55005  
(763) 434-9834

### **Bible Baptist Church**

1300 – 229th Ave NE, Bethel, MN 55005  
(763) 434-9576

### **Echoes of Calvary Church**

22115 Quincy St. NE, Cedar, MN 55011  
(763) 413-1021

### **Patrick Catholic Church**

19921 Nightingale St NW  
Oak Grove, MN 55011  
(763) 753-2011

### **Our Saviours' Lutheran Church**

19001 Jackson St NE, Cedar, MN 55011  
(763) 434-6117

### **St. Andrew Lutheran Church**

1450-237th Ave NE, Bethel, MN 55005  
(763) 434-7146

### **West Bethel United Methodist**

1233 221st Ave NE, Cedar, MN 55011  
(763) 434-6451

**St.**

## THANK YOU FROM EAST BETHEL

Please contact East Bethel City Hall with any questions, comments, or concerns:

2241 221st Ave

East Bethel, MN 55011

**Phone:** 763-367-7840

**Fax:** 763-434-9578

[www.ci.east-bethel.mn.us](http://www.ci.east-bethel.mn.us)



[Back to Top](#)