

# Distech Controls Software Center Installation

---

## Product(s)

Software Center

## Last Modified

14/02/2025

## Series/Revision

All versions

## Introduction

This application note will help guide you through the steps for installing Distech Controls software via our 'Software Center'.

Software Center is a direct interface to our software repository that provides a simple and efficient method of installing and updating all Distech Controls applications, firmware updates and application plug-ins.

Once installed, Software Center will automatically verify the version and installation condition of files downloaded/installed on your local hard-drive and prompt you when updated versions are available for download from our servers.

It communicates automatically with our software servers and therefore requires an internet connection to operate.

Software Center is the preferred way of maintaining the latest applications and packages on any machine running Distech Controls software; whether an engineering laptop, office engineering-server or end-user PC.

The installation of Software Center is a *mandatory* pre-requisite before your Distech Controls training course, along with applying to [salesadmin@distech-controls.com](mailto:salesadmin@distech-controls.com) for any licenses that may be required (EC-Net/Designer). Please see Section 3 on page 8.

## Information

The initial download of Software Center itself is only around 4MB, but the applications you will be managing through it can be up to Gigabytes in size, so a reasonable internet speed (>20Mbps) is recommended for downloading and updating the items within Software Center.

**Please note that all our software is designed to run on Windows OS (minimum Windows 8)**

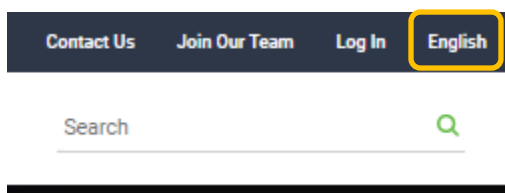
**Please check that the applications and resources downloaded for your training and your future workflow are all working properly before attempting to use them in application**

1.	Distech Controls Client Login .....	3
2.	Using the Interface .....	7
3.	Downloading from Software Center .....	8
4.	Downloaded Items from Software Center.....	9
5.	Mobile Apps.....	10
6.	Assistance .....	11

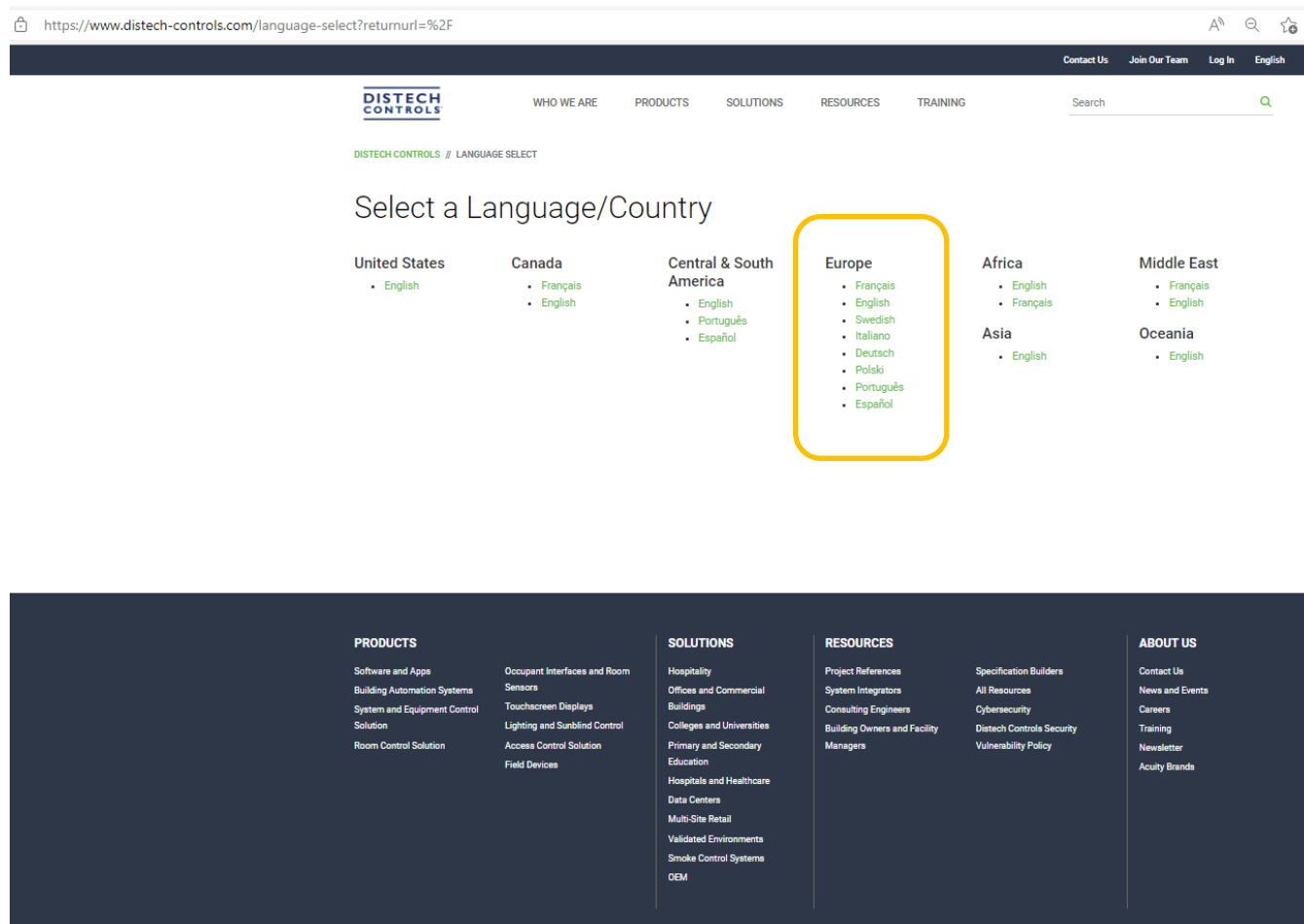
## 1. Distech Controls Client Login

Go to the Distech Controls Website <https://www.distech-controls.com>

Select your correct Language/Country by using the button located on the right top corner (pictured here as 'English'):



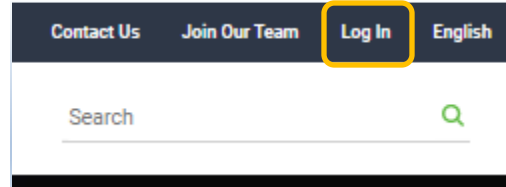
Then select your preferred language according to your geographical region:



**Please note that different geographical selections give access to different resources on the website; you must select the region that is applicable to your account, otherwise you may be accessing the wrong materials**

Before you can download Software Center, you will need to have registered your email on our Web-Portal's SSO (single-sign-on) system.

If this is not already done, create an account by clicking on the 'Log In' icon on the top right of the site:



Your account is created by entering your **corporate email address** in the 'Create Account' dialogue box that is towards the bottom of the page or on this link:

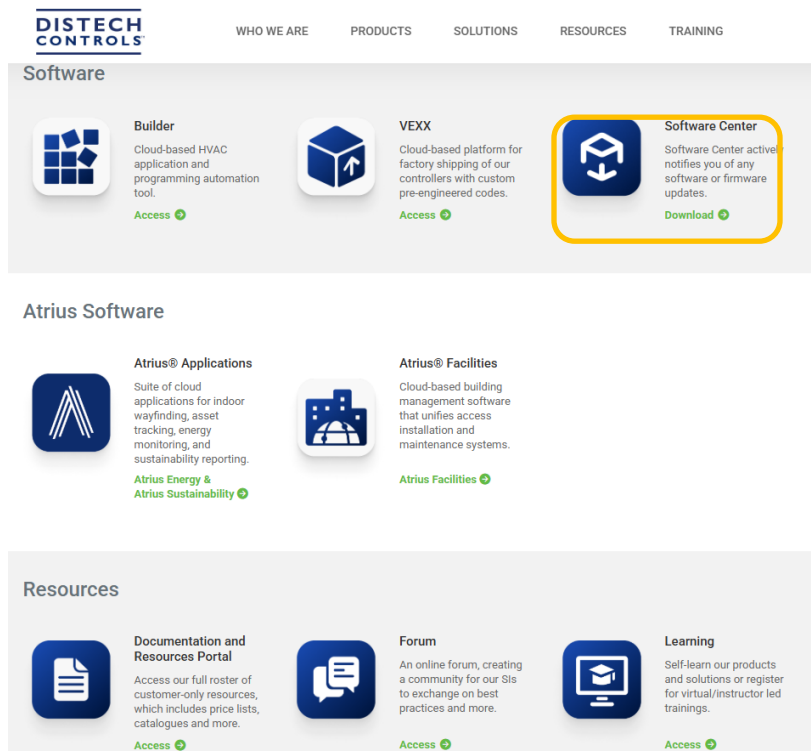
A screenshot showing two parts of a web page. The top part has a dark blue background with the text 'Login Access' in large white font. Below it, in smaller white text, is 'Quickly access your favorite Distech Controls tools and resources'. At the bottom of this section is a yellow button with the text 'Create Account' and a green right-pointing arrow. The bottom part of the screenshot is a white box titled 'Create Account'. It contains the text: 'Use the same Single Sign-On (SSO) authentication for Builder, the documentation portal and the learning portal.' Below this are three icons: a wrench and screwdriver, a document, and an open book. There is an 'Email' input field. Below the field is a paragraph: 'By creating an account, you agree to our Privacy Policy, the Terms & Conditions and to receive email communications from Acuity Brands, its subsidiaries, and partner agencies.' Another paragraph follows: 'As accounts are reserved for Distech Controls direct channel partners, please be sure to use your corporate email address when registering. If you experience any issues while doing so, please contact your RSM.' At the bottom of the white box is a green button with the text 'REGISTER' in white.

**Note: Your email address must be your corporate (company) email address.**

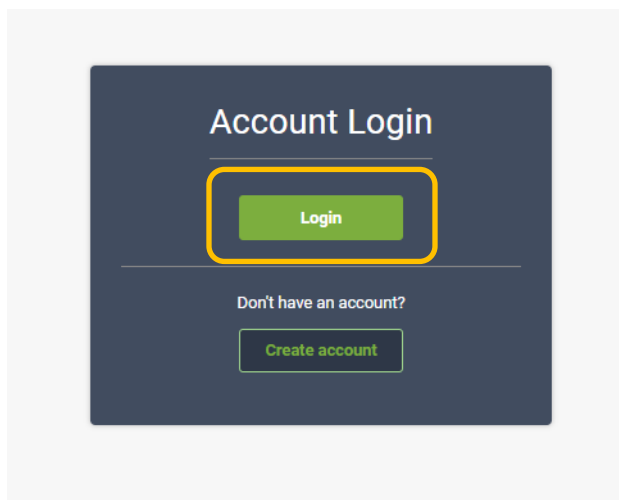
**Personal email addresses with domains such as @gmail.com will not be accepted**

Once you have registered your email address, you will receive an automatic email either confirming your registration is complete (if your company domain is set up for automatic approval) or advising you on the next steps to complete the verification process. Please check your Spam folders as this will be an automated process that some email clients will filter.

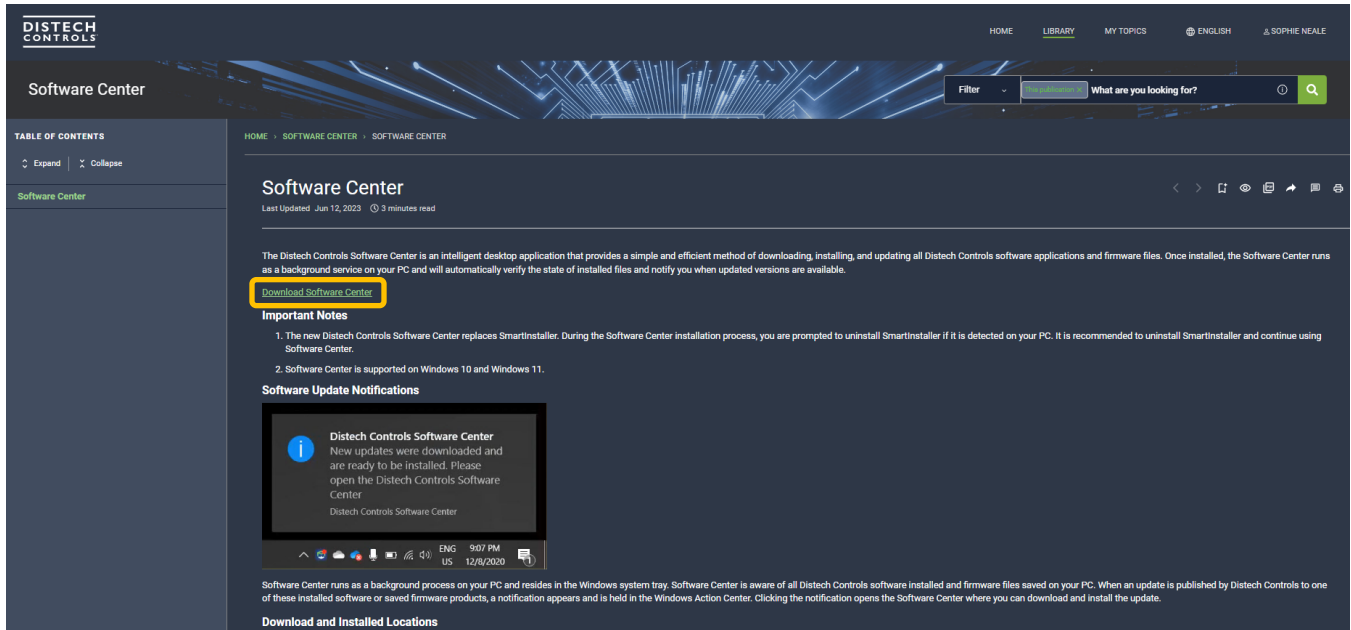
Once you have received your account creation confirmation, you will need to click on the Software Center icon that is on the 'Log In' page:



This link will take you to the section of our Documentation Portal where the Software Center application's downloadable installation executable is located. You will have to log in to the documentation portal by simply clicking on 'Login'. This utilises the account you set up in the previous steps:

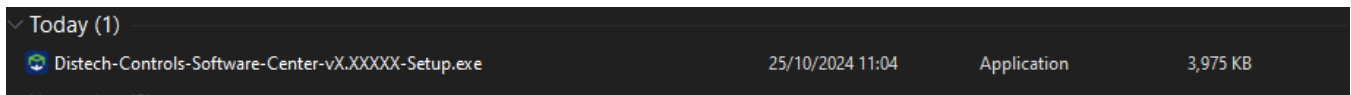


Select 'Download Software Center':

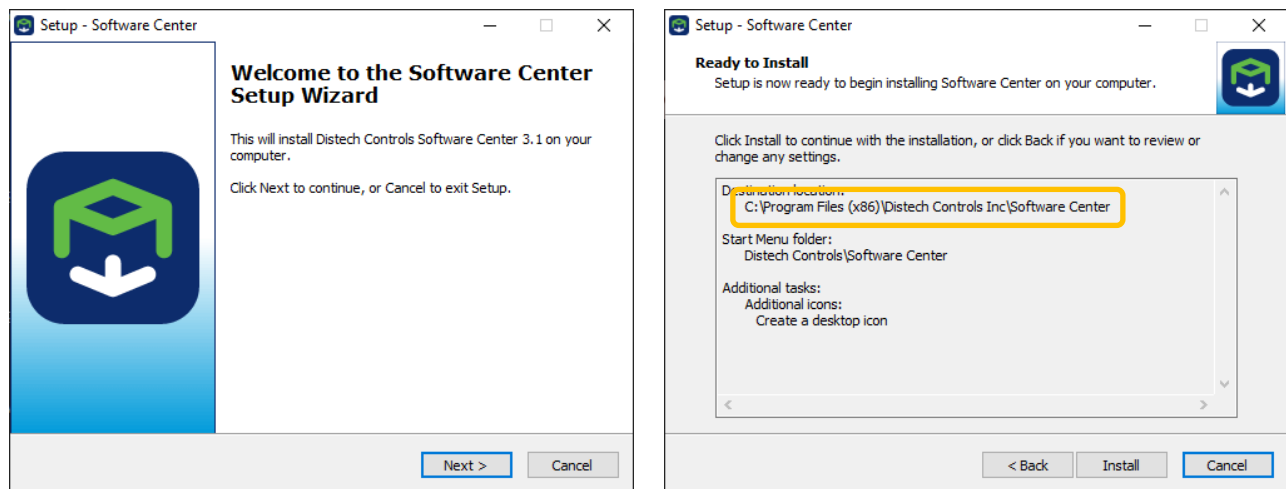


This page of the Documentation Portal also describes how to find the downloaded programs and apps, as well as the Windows startup, notification and downloading options.

Software Center installation .exe will download to your designated downloads area:

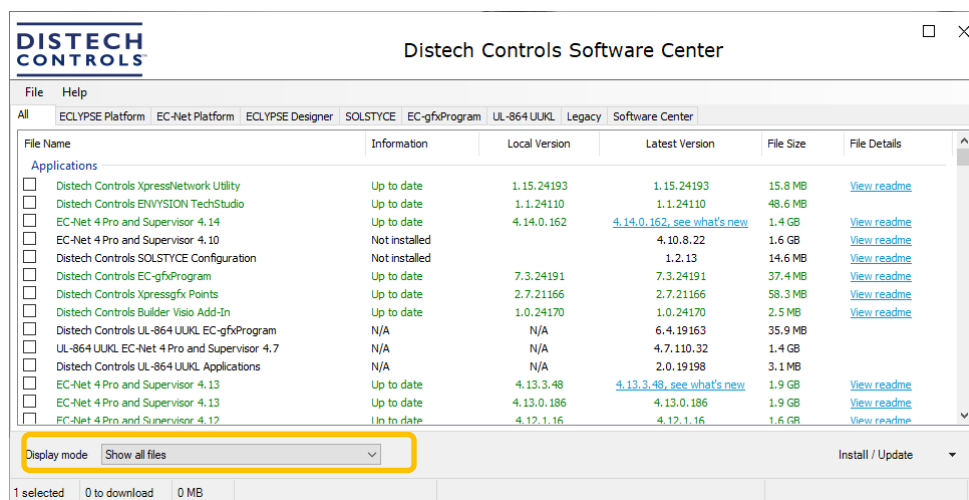


Run the installation wizard using the default file structure suggested; this application **must** be installed on the local hard drive and **not** have any associations to shared drives (OneDrive etc):



## 2. Using the Interface

Software Center is divided into tabs to represent the different software categories of our product range. You select your display mode with the drop-down box at the bottom of the window:



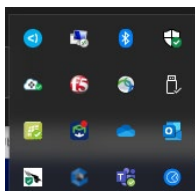
- **ECLYPSE Platform:** This has all the firmware files for the ECY range of controllers, as well as the XpressNetwork Utility program.
- **EC-Net Platform:** Here you will find the latest versions of our Niagara-based engineering/supervisor software and the services and drivers for Niagara installations.
- **ECLYPSE Designer:** This tab contains the components of our Graphic User Interface software and its associated component/widget libraries.
- **SOLSTYCE:** Our DALI lighting solution software.
- **EC-gfxProgram:** Our code/wiresheet creation and editing software is found here. Under this tab you will also find the firmware files for our ECB/ECL ranges of controllers.

If the item in Software Center has never been installed on the PC, or has been removed in some way, the text for the item will be displayed in black and the 'Local Version' column will show N/A.

If the item is installed and up-to-date, it will show as green text and the Local Version will be the same as the 'Latest version' and the 'Information' column will display 'Up to date'.

If there is an update available to a previously installed item, the line will display red text and the Local Version will be different to the Latest Version and the Information column will show 'Need update'. Your Software Center hidden icon will also have a red dot.

File Name	Information	Local Version	Latest Version	File Size	File Details
<b>Applications</b>					
<input checked="" type="checkbox"/> Distech Controls XpressNetwork Utility	Up to date	1.11.20339	1.11.20339	18.0 MB	<a href="#">View readme</a>
<input type="checkbox"/> Distech Controls ENVISION TechStudio	Up to date	1.1.20094	1.1.20094	47.4 MB	
<input type="checkbox"/> EC-Net AX Pro and Supervisor 3.8	N/A	N/A	3.8.504	829.3 MB	<a href="#">View readme</a>
<input type="checkbox"/> EC-Net 4 Pro and Supervisor 4.4	N/A	N/A	4.4.94.14	1.6 GB	<a href="#">View readme</a>
<input type="checkbox"/> EC-Net 4 Pro and Supervisor 4.9	N/A	N/A	4.9.0.60	1.5 GB	<a href="#">View readme</a>
<input type="checkbox"/> EC-Net AX Security Pro and Supervisor	N/A	N/A	2.3.303	976.4 MB	<a href="#">View readme</a>
<input checked="" type="checkbox"/> Distech Controls SOLSTYCE Configuration	Need update	1.0.33	1.1.8	12.4 MB	
<input checked="" type="checkbox"/> Distech Controls EC-gfxProgram	Up to date	6.6.20212	6.6.20212	35.7 MB	<a href="#">View readme</a>
<input checked="" type="checkbox"/> Distech Controls Xpressgfx Points	Up to date	2.6.20119	2.6.20119	55.6 MB	<a href="#">View readme</a>
<input type="checkbox"/> EC-Net AX EnerVue	Up to date	2.4.19094	2.4.19094	109.4 MB	
<input type="checkbox"/> Distech Controls Bacnet FacilVue	N/A	N/A	1.12	186.4 MB	
<input type="checkbox"/> Lonwatcher	Up to date	3.4.1422.1	3.4.1422.1	94.3 MB	<a href="#">View readme</a>
<input type="checkbox"/> Londisplay	Not installed		3.7.418	143.1 MB	<a href="#">View readme</a>
<input type="checkbox"/> INS Server	In to date	3.27.14	3.27.14	38.7 MB	



Distech Controls UK/SAS  
+ 33 (0)4 78 45 65 68 (English)  
+ 33 (0)4 78 45 65 55 (French)  
Tel. UK Direct Phone: +44 (0) 0207 092 3430  
[www.distech-controls.com](http://www.distech-controls.com)  
[TechnicalSupportEurope@distech-controls.com](mailto:TechnicalSupportEurope@distech-controls.com)

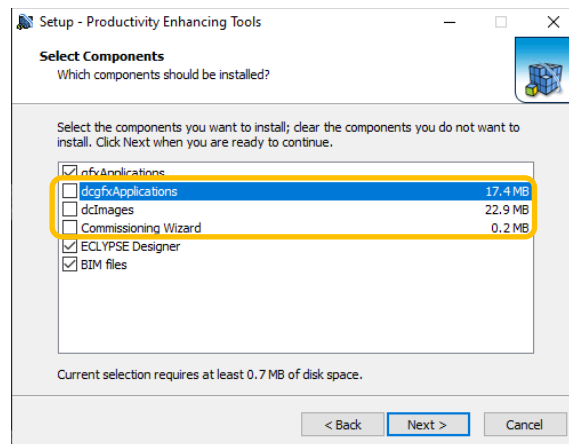
### 3. Downloading from Software Center

The software you are going to download will depend on the training session you are registered for:

Training Programme	Items to Install -	Licence
EC-gfxProgram, Eclipse Controllers and Facilities Interface: TR-3001  Cross over Eclipse Facilities: TR-3501  Designer Advanced, dcLibrary & Dashboard: TR-6611	<ul style="list-style-type: none"> <li>Distech Controls EC-gfxProgram (EC-gfxProgram tab)</li> <li>Distech Controls XpressNetwork Utility (ECLYPSE Platform tab)</li> <li>Distech Controls Productivity Enhancing Tools (EC-Net Platform tab): <b>See note 1 below</b></li> <li>Distech Controls dcLibrary (ECLYPSE Designer tab)</li> </ul>	None required
EC-Net 4 & EC-BOS-9 BACnet/IP Supervisor: TR-4101  EC-Net 4 EC-gfxProgram BACnet controllers: TR-8101  Niagara N4 Engineer Upskill Training: TR-8501	<ul style="list-style-type: none"> <li>EC-Net 4 (EC-Net Platform tab)</li> <li>Distech Controls EC-Net support Pack (EC-Net Platform tab)</li> <li>Distech Controls EC-Net BACnet AWS OWS Support Pack (EC-Net Platform tab)</li> <li>Distech Controls EC-gfxProgram (EC-gfxProgram tab)</li> <li>Distech Controls Productivity Enhancing Tools (EC-Net Platform tab)</li> </ul> <p style="text-align: center;"><b>See note 2 below</b></p>	Send EC-Net Platform Host ID Win-xxxx-... to <a href="mailto:salesadmin@distech-controls.com">salesadmin@distech-controls.com</a> with subject "Demo license request for training" and your training session reference.

Although you can select multiple items to download/install, they will process the installations sequentially. Please complete each installation wizard before attempting to restart any download or install.

**Note 1:** If you are installing Productivity Enhancing Tools without an installation of EC-Net (or other Niagara platform) on your machine, you will need to exclude the following options when running the installation wizard:



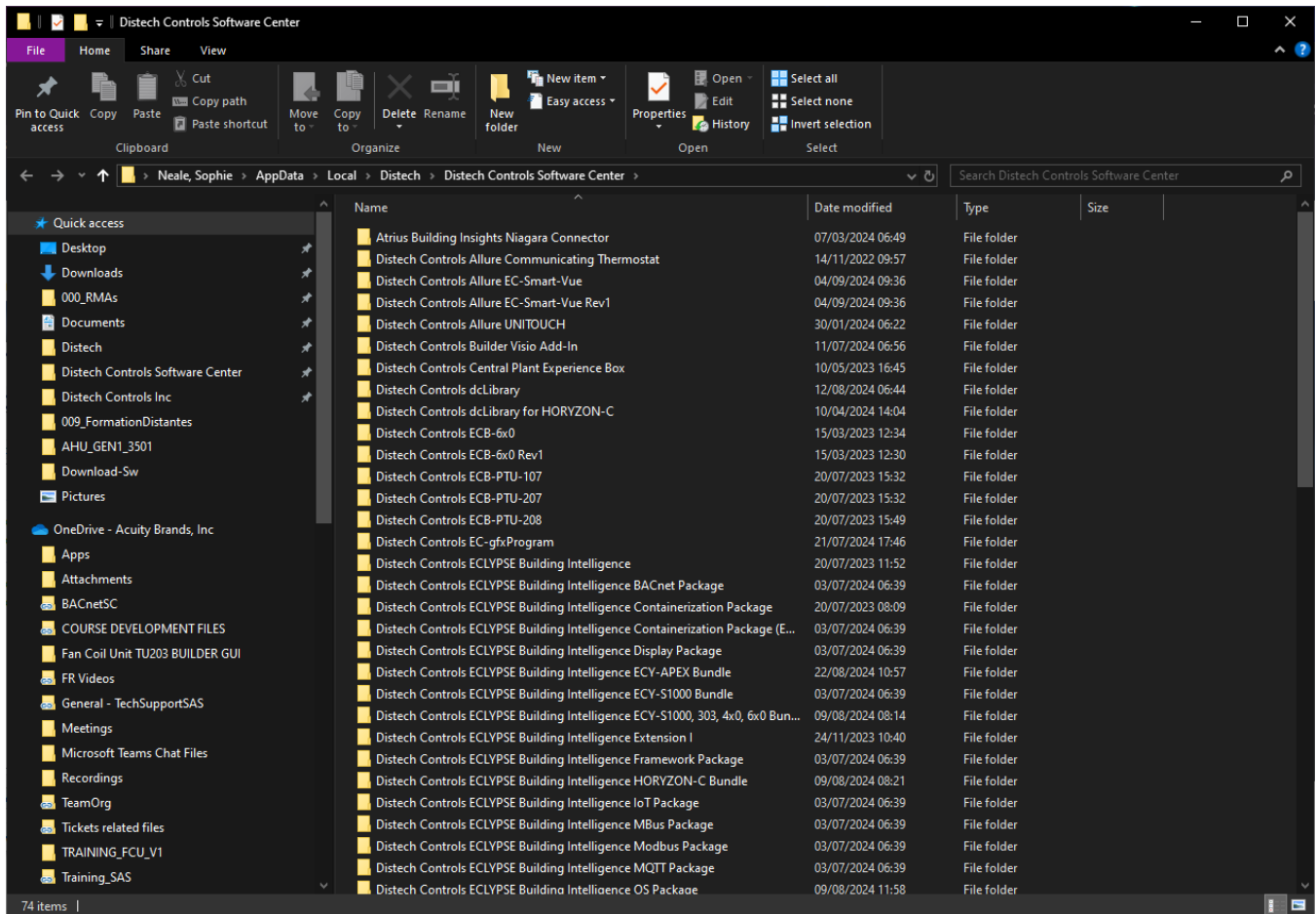
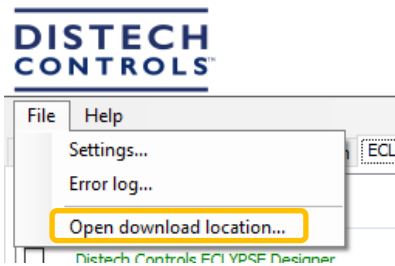
**Note 2:** EC-Net software installation should be done in 3 steps due to dependencies between items.

1. EC-Net 4 (latest Version)
2. EC-Net Support package and EC-Net BACnet OWS
3. EC-gfxProgram
4. Productivity Enhancing Tools and other items (Designer,...).

## 4. Downloaded Items from Software Center

Most downloaded items will be saved under the path C:\Users\Name\AppData\Local\Distech\Distech Controls Software Center

This path is directly reachable using 'File'-'>'Open Download Location'



## 5. Mobile Apps

Distech Controls also have apps designed for mobile devices and tablets that are available from the devices' app-store (Google Play or Apple App Store)

If you encounter issues with the download of any of the applications, please contact technical support or ask your trainer for assistance.

### xPressNetwork Companion:



An assistant application for xPressNetwork Utility to make ECY controller network configuration simple and quick

### ECLYPSE Mobile:



A quick and easy way to interface to your controllers and access the point data on board (Compatible with Eclipse Facilities controllers only)

### myDC Control:



A quick and easy way to interface to your controllers and access the point data on board (Compatible with Generation 1 ECY controllers only)

### My Personify:



Application to allow the building occupants to interface with their DC Space room devices via Bluetooth

### Atrius Facilities:



A quick way for managing and onboarding your Eclipse Facilities controllers to the Atrius Facilities platform

## 6. Assistance

If you are experiencing problems with any of the above prior to your training, you can contact Distech Training EMEA who will obtain the best help for you.

Having the software applicable to your course downloaded, installed and configured before the training is ideal to reduce lost time in the classroom due to issues that are easily solved in advance, however; some installation set up is covered within certain courses (EC-Net installation and licensing for example).

If you are in any doubt about your set up pre-training, please reach out to us and we will be glad to help!

We look forward to seeing you in the classroom!

## DISCLAIMER

This tech-note is intended to provide general technical information on a particular subject or subjects and is not an exhaustive treatment of such subjects. Accordingly, the information in this web site is not intended to constitute application, design, software or other professional engineering advice or services.

Distech Controls, the Distech Controls logo, Allure, and Allure UNITOUCH are registered trademarks of Distech Controls, Inc. BACnet is a registered trademark of ASHRAE. The Bluetooth® word mark and logos are registered trademarks owned by Bluetooth SIG, Inc. and any use of such marks is under license. All other trademarks are property of their respective owners. Distech Controls does not warrant the completeness, timeliness or accuracy of any of the data contained in this web site and may make changes at any time in its sole discretion without notice.